



PARTS CATALOG

Published

2009/11 (Nov.)

0CNP2-G94700

Directions for the Parts Catalog.

1. The parts stipulated in this Parts Catalog are not necessarily standard equipped parts.
2. Parts may change without prior notice.
3. The following is an example of the Parts Catalog format.

REF.	LEV.	PARTS NO.	DESCRIPTION	Q'TY						I	R
				(A)	(B)	(C)	(D)	(E)	(F)		
1	1	729595-51390	FUEL INJECTION PUMP	1	1	1	1	1			1
1-1	1	729595-51391	FUEL INJECTION PUMP	1	1	1	1	1		N	1
		(A=E00185) (B=E00200)									
3	2	26022-060162	SCREW M 6X 16	9	9	9	9	9			
3-1	2	26022-060162	SCREW M 6X 16	4	4	4	4	4		K	
		(A=E00156) (B=E00156) (C=E00156) (D=E00156) (E=E00156)									
4	2	129470-51040	CAMSHAFT	1	1	1	1	1			
5	2	122710-51050	BEARING, ROLLER	2	2	2	2	2			
6	2	129470-51060	RETAINER	1	1	1	1	1			

Remarks
(1) BOOST COMPEMSATOR TYPE. OPTIONAL PART, TO E00155,(4JH-DT, 4JH-DTZ

① Ref. No.

The Ref. No. listed may not be in accordance with the illustration Ref. No.

(Ex.) Illustration No.

List Ref No.

1

1

(Before change)

1-1

(After change)

For interchangeable symbols N, R and K, illustrations for new parts may be abbreviated.

② Lev. (Level)

Level indication

The numbers below indicate the level of relativity towards the main part.

1 ----- Main parts (Assembly parts)

2 ----- Sub component included in " 1 ".

3 ----- Sub component included in " 2 ".

Note) Parts that are not for sale are partially illustrated but not listed.

③ Interchangeability Mark

When a part change takes place, one of the following interchangeability symbols is indicated beside the part.

Symbol	Interchangeability	Contents note
N	Old $\begin{matrix} \leftarrow \text{Yes} \\ \text{No} \rightarrow \end{matrix}$ New	New Part is interchangeable for Old Part but Old Part is not interchangeable for New Part.
Q	Old $\begin{matrix} \leftarrow \text{No} \\ \text{Yes} \rightarrow \end{matrix}$ New	New Part is not interchangeable for Old Part but Old Part is interchangeable for New Part.
R	Old $\begin{matrix} \leftarrow \text{Yes} \\ \text{Yes} \rightarrow \end{matrix}$ New	New/ Old Parts are both interchangeable.
S	Old $\begin{matrix} \leftarrow \text{No} \\ \text{No} \rightarrow \end{matrix}$ New	New/ Old Parts are both not interchangeable.
W		Part discontinued.
Z		Part newly added.
F		Not interchangeable by a single part but interchangeable together with related parts.
K		Changes only for used parts quantities.

④ Effective Machine No.

When a part changes, the effective Machine No. will be indicated in the (A)-(F) column.

Product Symbol	Product No.	Product Symbol	Product No.
C	Clutch No. Compressor No.	F	Machine No. (Agricultural Equip.)
D	Drive No.	M	Machine No.
E	Engine No.	Note 1)	Date

Note 1) A date may follow the symbol. (Ex.) 1996.01

Note 2) " XXX " are for parts that could not be predicted or for engine models that could not be identified.

Note 3) (A=E00185) is the E (Engine Serial Number) for the column (A) model (in this case 4JH-DT) after the parts design change.

⑤ Remarks Mark

Figures or alphabets (symbols) are entered in the remarks column.

The comments (remarks) on parts that are indicated at the bottom of the illustration are the same symbols as those stated above.

TABLE OF DETAILS OF SPECIFICATIONS

DIVISION	SPECIFICATIONS	Platform Type	Starter Type
		Manual Dump Platform	Recoil Starter
A	MCG91	○	○

CONTENTS

MODEL : MCG91(
PC NO : 0CNP2-G94700

Fig.No. GROUP NAME
PULLEY & TENSION SECTION

1. TENSION ARM
2. PULLEY

FRAME SECTION

3. BODY FRAME

TRAVELING SECTION (1)

4. IDLER
5. TRACK ROLLER

CONTROL SECTION

6. HANDLE
7. TRAVEL LEVER
8. BRAKE LEVER
9. MAIN CHANGE LEVER
10. SIDE CLUTCH LEVER

PLATFORM CARRIER SECTION

11. PLATFORM CARRIER

TOOLS,ACCESSORIES & LABELS SEC

12. LABELS
13. TOOLS & ACCESSORIES

CONTROL SECTION

14. DEADMAN LEVER(ADD.ITEM

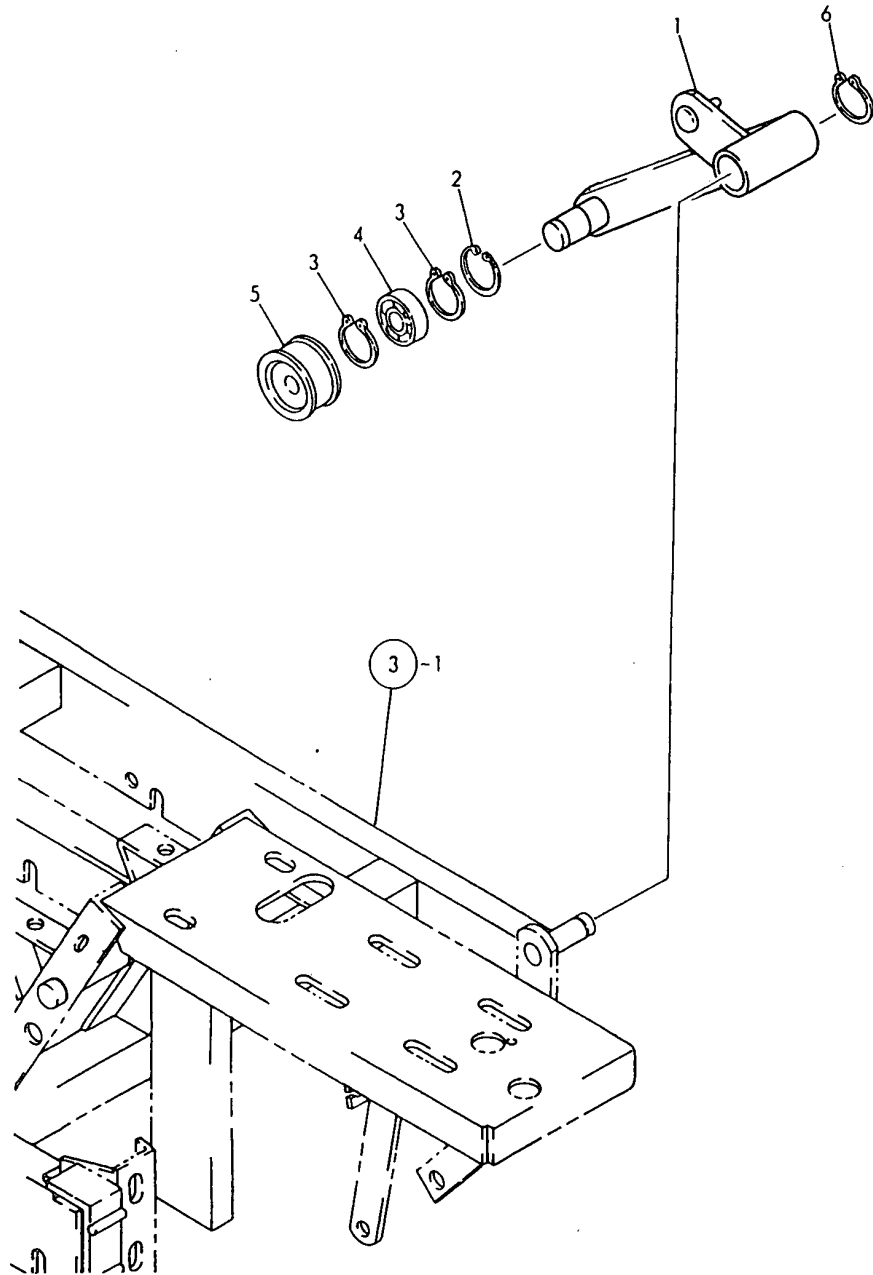
TOOLS,ACCESSORIES & LABELS SEC

15. LABELS(ADD.ITEM

Fig.No. GROUP NAME

Fig.1. TENSION ARM

1. TENSION ARM



0CNP2-G94700 1. TENSION ARM

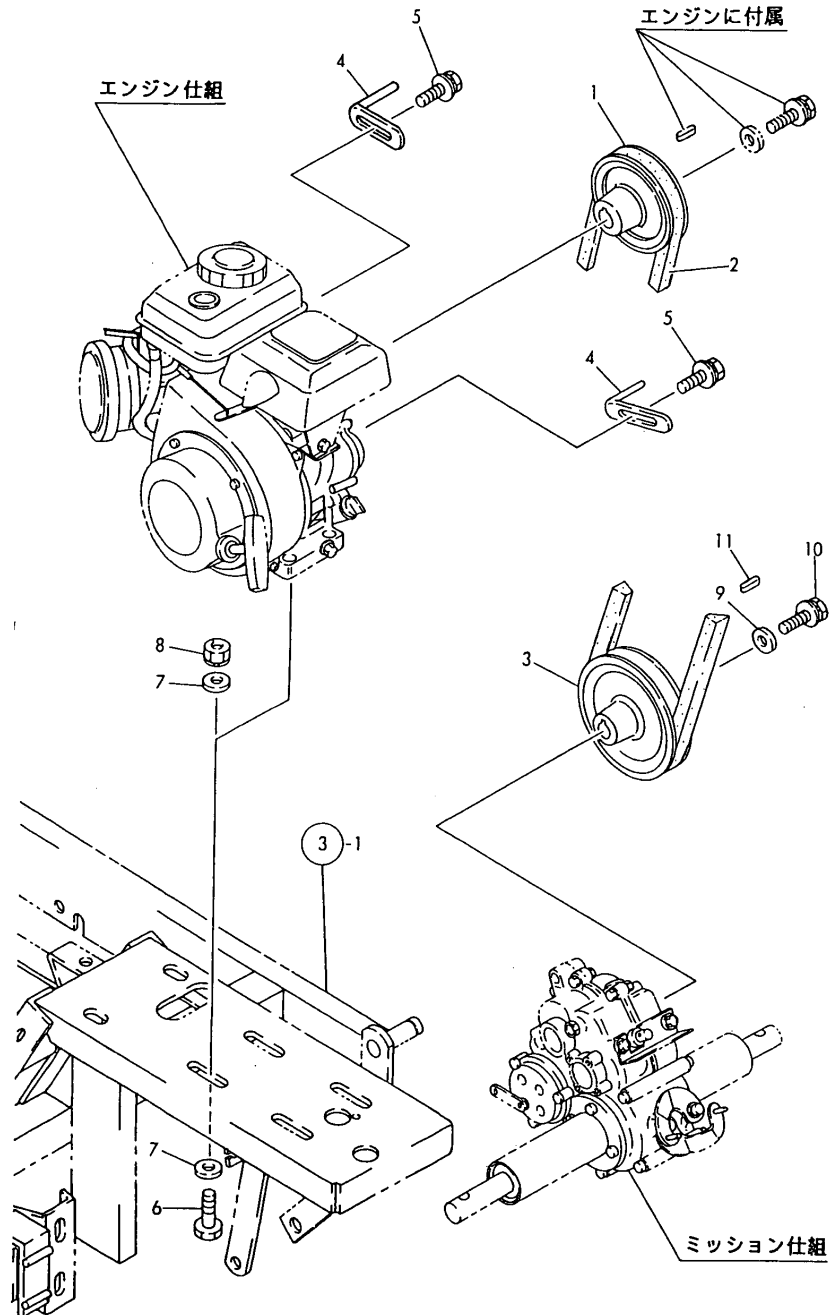
(A)=MCG91(-PQ(R)
 (B)=MCG91(-PQ(MC2)
 (C)=

(D)=
 (E)=
 (F)=

REF.	LEV.	PARTS NO.	DESCRIPTION	Q'TY						I	R
				(A)	(B)	(C)	(D)	(E)	(F)		
1	1	1N3501-22000	ARM A,TENSION	1	1						
2	1	22252-000350	CIRCLIP 35	1	1						
3	1	22242-000150	CIRCLIP 15	2	2						
4	1	24104-062024	BALL BEARING	1	1						
5	1	1N1430-22070	ROLLER,TENSION	1	1						
6	1	22242-000160	CIRCLIP 16	1	1						

Fig.2. PULLEY

2. PULLEY



OCNP2-G94700 2. PULLEY

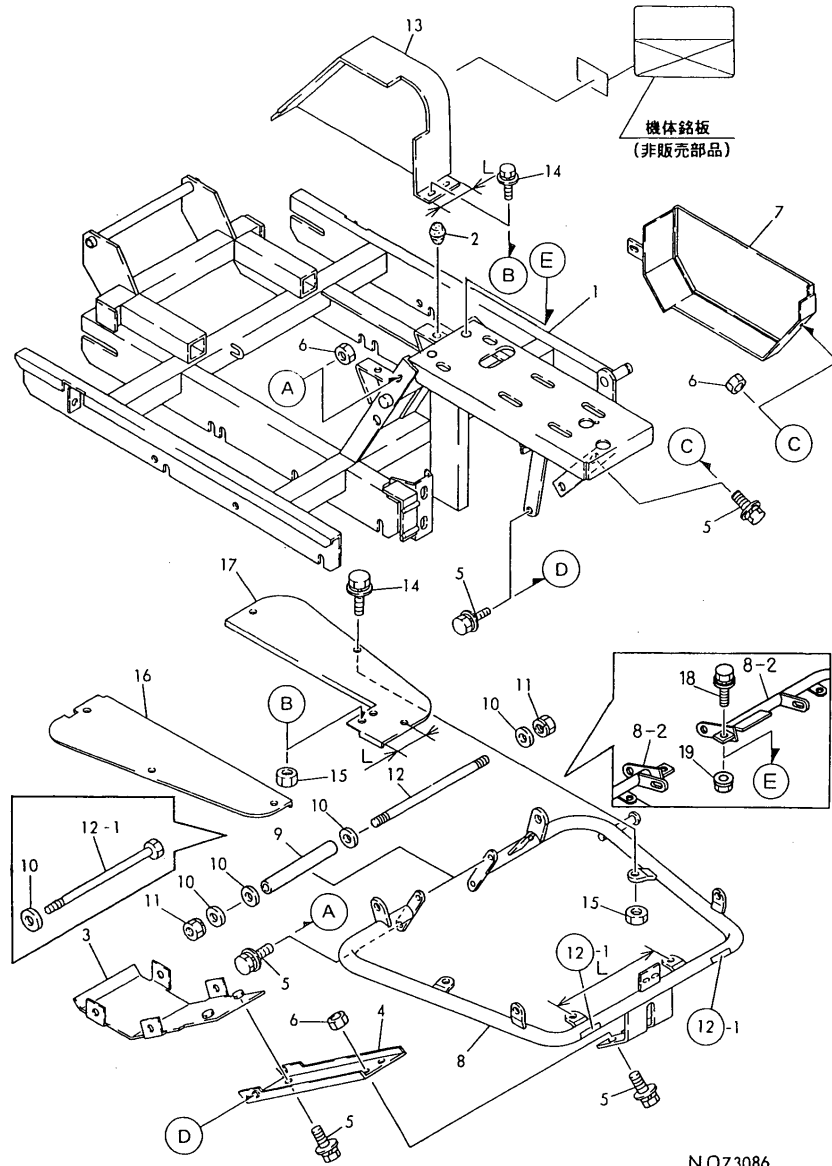
(A)=MCG91(-PQ(R)
 (B)=MCG91(-PQ(MC2)
 (C)=

(D)=
 (E)=
 (F)=

REF.	LEV.	PARTS NO.	DESCRIPTION	QTY						I	R
				(A)	(B)	(C)	(D)	(E)	(F)		
1	1	1N3501-21000	PULLEY,ENGINE	1	1						
2	1	25123-003201	V-BELT	1	1						
3	1	1N3501-21010	PULLEY,TRANSMISSION	1	1						
4	1	1N1291-22020	GUARD 40,BELT	2	2						
5	1	26018-080164	BOLT M 8X 16	2	2						
6	1	26116-080452	BOLT M 8X 45 PLATED	4							
I	6-1	1 26106-080452	BOLT M 8X 45 PLATED	4	4						N
		(A=FXXXXXX)									
7	1	22137-080000	WASHER 8, POLISHED	8	8						
8	1	26051-080002	NUT M 8	4	4						
9	1	1N1240-21040	WASHER	1	1						
10	1	26016-060164	BOLT 6X16 W/L.W.	1	1						
11	1	22550-050251	KEY 5X25	1	1						

Fig.3. BODY FRAME

3. BODY FRAME



Remarks

- (1)REF. NO.8 HAS L=273 MM WHILE REF. NO.8-1 HAS L=223 MM.
- (2)REF. NO.17 HAS L=82 MM WHILE REF. NO.17-1 HAS L=32 MM.

OCNP2-G94700 3. BODY FRAME

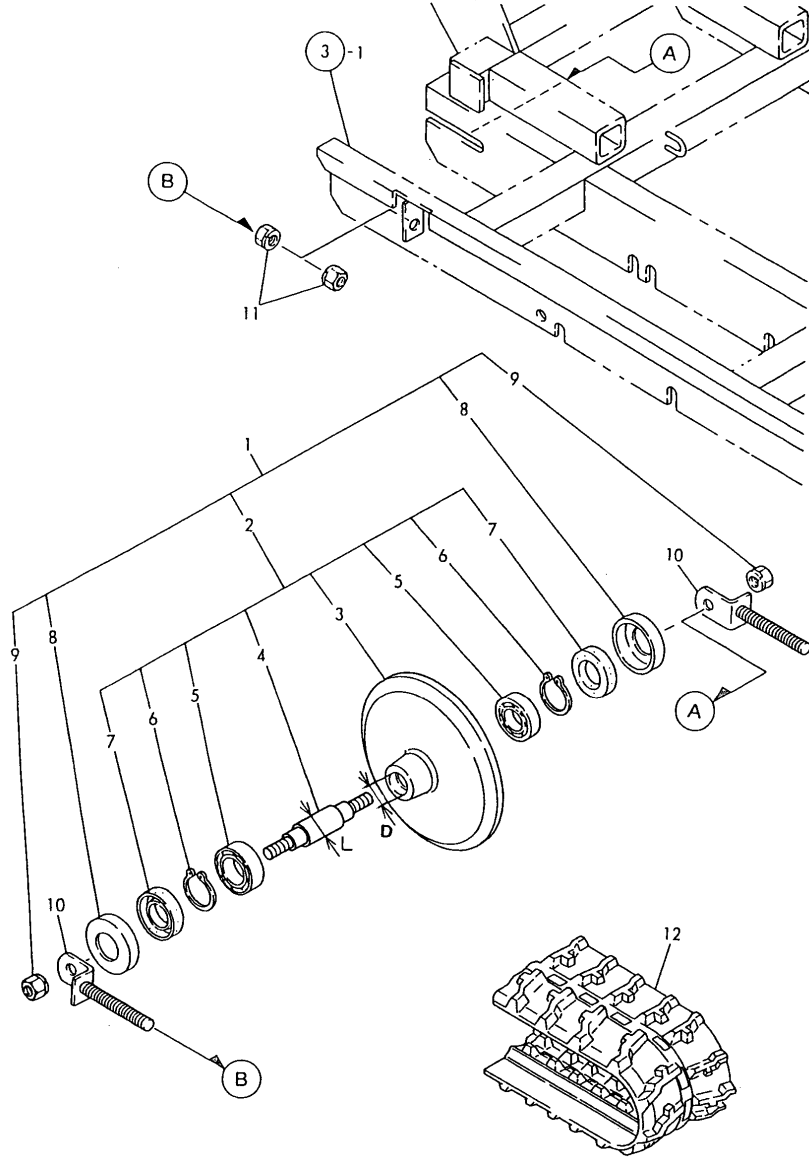
(A)=MCG91(-PQ(R)
(B)=MCG91(-PQ(MC2)
(C)=

(D)=
(E)=
(F)=

REF.	LEV.	PARTS NO.	DESCRIPTION	QTY						I	R
				(A)	(B)	(C)	(D)	(E)	(F)		
1	1	1N3501-31000	FRAME,BODY	1	1						
2	1	1N1101-44040	RUBBER,STOPPER	1							
2-1	1	1N1101-44040	RUBBER,STOPPER	2	2						K
(A=F010452)											
3	1	1N3500-58130	PROTECTOR	1	1						
4	1	1N3501-58090	GUARD,UNDER	1	1						
5	1	26018-080204	BOLT M 8X 20	9	9						
6	1	26367-080002	U-NUT M 8	7	7						
7	1	1N3501-58041	COVER A,UNDER	1							
I 7-1	1	1N3501-58300	COVER, UNDER *NH282M	1	1						S
(A=F019180)											
8	1	1N3501-54000	STEP	1							
I 8-1	1	1N3501-54001	STEP	1							S 1
(A=F010151)											
I 8-2	1	1N3501-54002	STEP	1	1						S
(A=F017334)											
I 9	1	1N1550-54100	PIPE (C)	1							Z
(A=F017334)											
10	1	22137-100000	WASHER 10,POLISHED	4							
10-1	1	22137-100000	WASHER 10,POLISHED	3							K
(A=F010529)											
I 10-2	1	22137-100000	WASHER 10,POLISHED	3							Z
(A=F017334)											
11	1	26051-100002	NUT M10	2							
11-1	1	26051-100002	NUT M10	1							K
(A=F010529)											
I 11-2	1	26051-100002	NUT M10	1							Z
(A=F017334)											
12	1	1N3500-54090	BOLT,STAY	1							
12-1	1	26117-101902	BOLT M10X190 PLATED	1							S
(A=F010529)											
I 12-2	1	26117-101902	BOLT M10X190 PLATED	1							Z
(A=F017334)											
13	1	1N3501-58120	COVER,PULLEY	1	1						
14	1	1N1291-58080	BOLT 6X16 W/P&SW.	9	9						
15	1	26367-060002	NUT M 6	8	8						
16	1	1N3501-54030	STEP L	1	1						
17	1	1N3501-54040	STEP R	1							
I 17-1	1	1N3501-54041	STEP R	1	1						S 2
(A=F010151)											
I 18	1	26018-080204	BOLT M 8X 20	2	2						W
(A=F017334)											
I 19	1	26367-080002	U-NUT M 8	2	2						W
(A=F017334)											

Fig.4. IDLER

4. IDLER



Remarks

(1)REF. NO.4 HAS L=17 MM WHILE REF. NO.4-1 HAS L=15 MM.
 (2)REF. NO.3 HAS D=35 MM WHILE REF. NO.3-1 HAS D=32 MM.

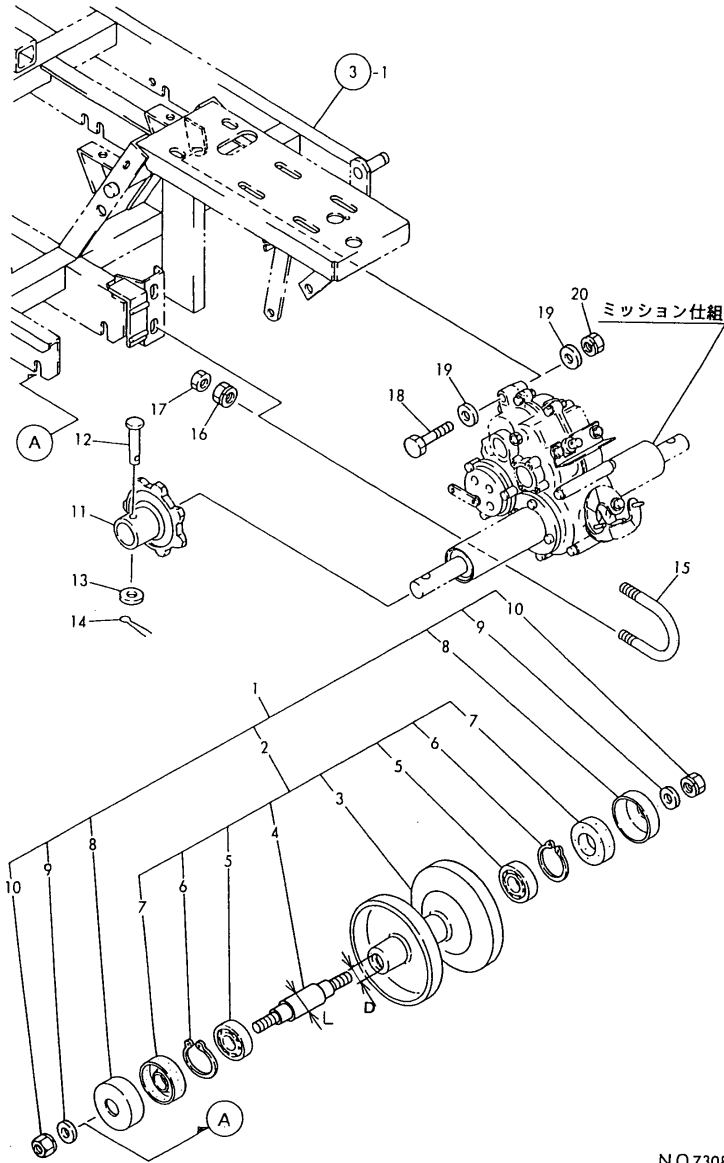
(A)=MCG91(-PQ(R)
 (B)=MCG91(-PQ(MC2)
 (C)=

(D)=
 (E)=
 (F)=

REF.	LEV.	PARTS NO.	DESCRIPTION	QTY						I	R
				(A)	(B)	(C)	(D)	(E)	(F)		
1	1	7N1292-35010	FLOAT RING SET	2							
1-1	1	7N3501-35010	FLOAT RING SET	2	2						S
(A=F010101)											
2	2	7N1292-35000	FLOAT RING ASSY.	2							
2-1	2	7N3501-35000	FLOAT RING ASSY.	2	2						S
(A=F010101)											
3	3	1N1292-35000	RING,FLOAT	2							
I	3-1	1N3501-35040	RING,FLOAT	2	2						S 2
(A=F010101)											
4	3	1N1292-35010	SHAFT	2							
I	4-1	1N3501-35020	SHAFT	2	2						S 1
(A=F010101)											
5	3	24101-060034	BALL BEARING	4							
5-1	3	24101-060024	BALL BEARING	4	4						S
(A=F010101)											
6	3	22242-000170	CIRCLIP 17	4							
6-1	3	22242-000150	CIRCLIP 15	4	4						S
(A=F010101)											
7	3	24421-173508	SEAL TC17 35 08, OIL	4							
7-1	3	24421-153206	SEAL TC 153206,OIL	4	4						S
(A=F010101)											
8	2	1N1091-36000	COVER,OIL SEAL	4	4						
9	2	26051-120002	NUT M12	4	4						
10	1	1N1291-37000	SCREW,ADJUST	4	4						
11	1	26051-120002	NUT M12	8	8						
12	1	1N3501-37000	CRAWLER 180X60X34,RB	2							
12-1	1	1N3501-37010	CRAWLER 180X60X34,RB	2	2						R
(A=F010452)											

Fig.5. TRACK ROLLER

5. TRACK ROLLER



NO73088

Remarks

- (1)REF. NO.4 HAS L=20 MM WHILE REF. NO.4-1 HAS L=15 MM.
- (2)REF. NO.3 HAS D=42 MM WHILE REF. NO.3-1 HAS D=32 MM.

OCNP2-G94700 5. TRACK ROLLER

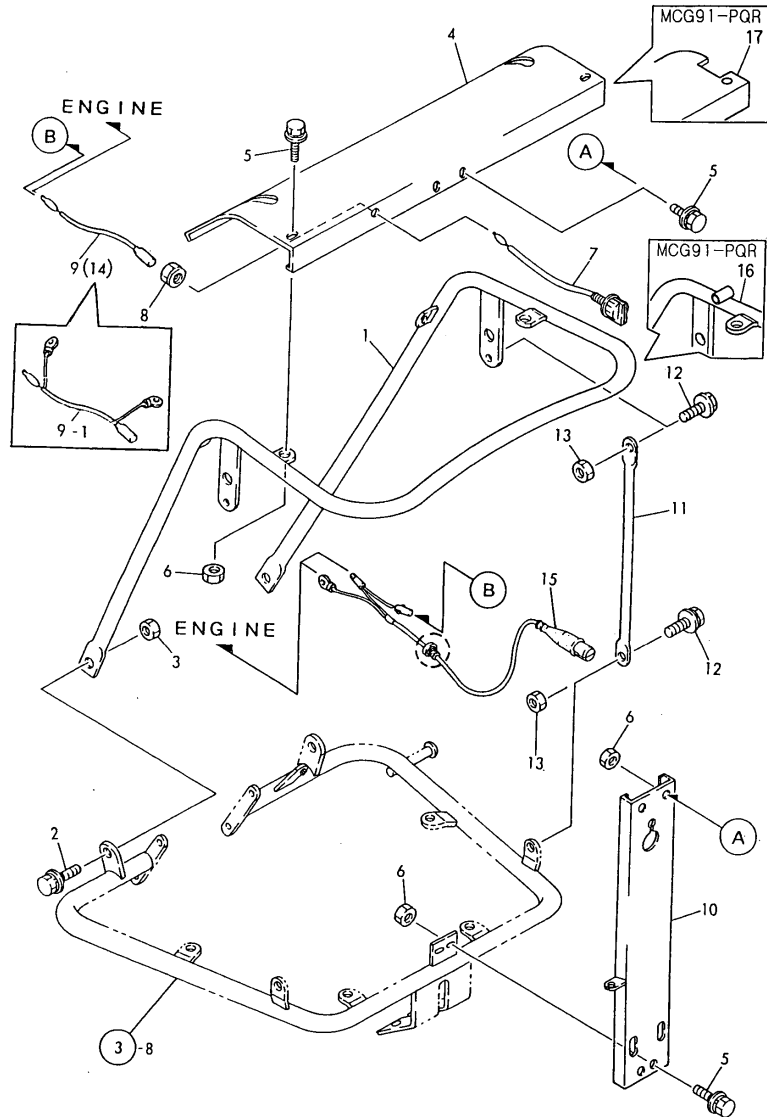
(A)=MCG91(-PQ(R)
(B)=MCG91(-PQ(MC2)
(C)=

(D)=
(E)=
(F)=

REF.	LEV.	PARTS NO.	DESCRIPTION	QTY						I	R
				(A)	(B)	(C)	(D)	(E)	(F)		
1	1	7N3510-36010	LWR.TRANK ROLLER SET	4							
1-1	1	7N3501-36010	LWR.TRANK ROLLER SET	4	4						S
(A=F010101)											
2	2	7N3510-36000	LWR.TRANK ROLLER ASY	4							
2-1	2	7N3501-36000	LWR.TRANK ROLLER ASY	4	4						S
(A=F010101)											
3	3	1N1361-36000	ROLLER,LOWER TRANK	4							
I 3-1	3	1N3501-36010	ROLLER,LOWER TRACK	4	4						S 2
(A=F010101)											
4	3	1N3510-35010	SHAFT M12X166	4							
I 4-1	3	1N3501-35020	SHAFT	4	4						S 1
(A=F010101)											
5	3	24101-060044	BALL BEARING #6004	8							
5-1	3	24101-060024	BALL BEARING	8	8						S
(A=F010101)											
6	3	22242-000200	CIRCLIP 20	8							
6-1	3	22242-000170	CIRCLIP 17	8	8						S
(A=F010101)											
7	3	24421-204208	SEAL TC20 42 08, OIL	8							
7-1	3	24421-153206	SEAL TC 153206,OIL	8	8						S
(A=F010101)											
8	2	1N1091-36000	COVER,OIL SEAL	8	8						
9	2	22137-120000	WASHER 12,POLISHED	8	8						
10	1	26051-120002	NUT M12	8	8						
11	1	1N1291-35000	SPROCKET	2	2						
12	1	1N1291-35020	PIN,AXLE	2	2						
13	1	22137-100000	WASHER 10,POLISHED	2	2						
14	1	22417-250250	COTTER PIN 2.5X25	2	2						
15	1	1N1210-35100	U-BOLT	2							
I 15-1	1	1N3501-35030	U-BOLT	2	2						R
(A=F017334)											
16	1	26052-100002	NUT M10 W/SPRING	4	4						
17	1	26757-100002	LOCK NUT M10	4	4						
18	1	26117-100702	BOLT M10X 70 PLATED	1	1						
19	1	22137-100000	WASHER 10,POLISHED	2	2						
20	1	26051-100002	NUT M10	1	1						

Fig.6. HANDLE

6. HANDLE



Remarks

(1)EXCLUSIVE PARTS FOR MCG91-PQ
 (2)EXCLUSIVE PARTS FOR MCG91-PQR
 * REF. NO.15 IS PROVIDED WITH CIRCLE-
 MARKED PARTS WHILE REF.NO.15-1 IS
 NOT PROVIDED WITH THE CIRCLE-MARKED

OCNP2-G94700 6. HANDLE

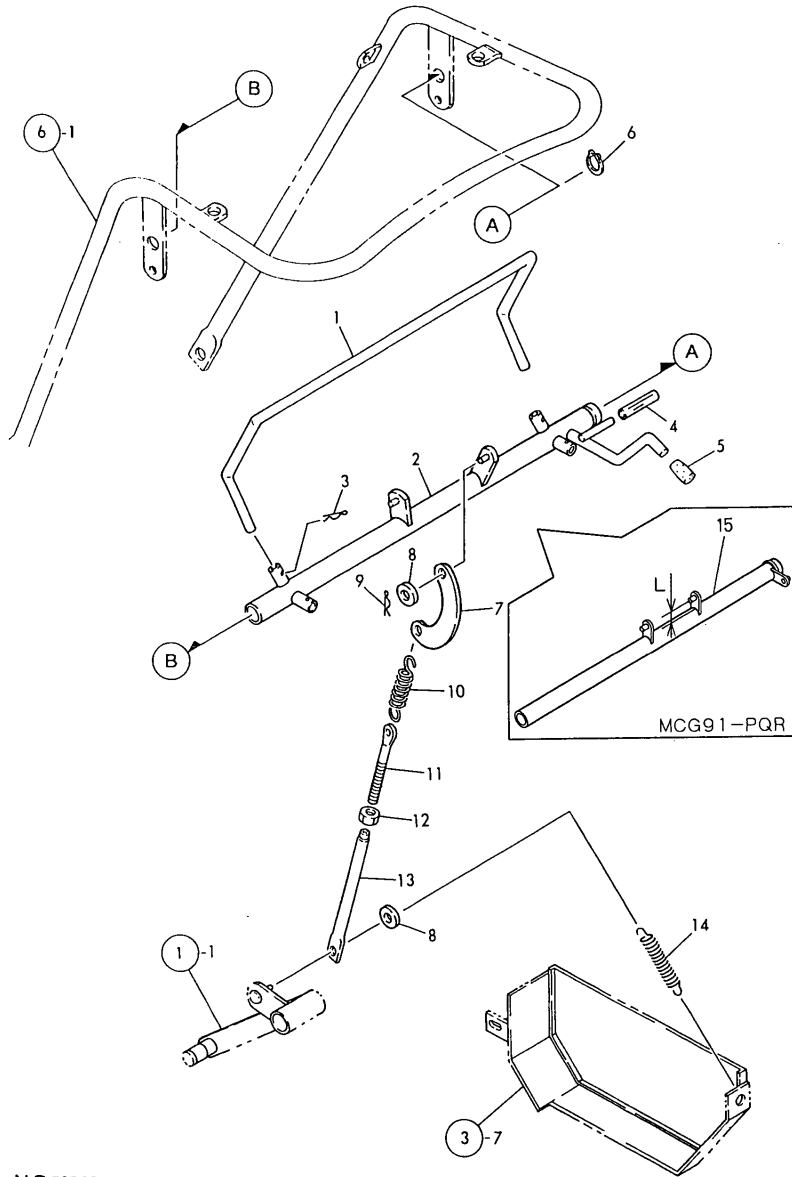
(A)=MCG91(-PQ(R)
 (B)=MCG91(-PQ(MC2)
 (C)=

(D)=
 (E)=
 (F)=

REF.	LEV.	PARTS NO.	DESCRIPTION	QTY						I	R
				(A)	(B)	(C)	(D)	(E)	(F)		
1	1	1N3501-47000	HANDLE A	1							
I	1-1	1N3501-47000-1	HANDLE A	1							S
(A=F017864)											
2	1	26018-100254	BOLT M10X 25	2	2						
3	1	26367-100002	U-NUT M10	2	2						
4	1	1N3501-58000	PANEL,CONTROL	1							
5	1	1N1291-58080	BOLT 6X16 W/P&SW.	8	8						
6	1	26367-060002	NUT M 6	8	8						
7	1	1A1470-40900	SWITCH,STOP	1	1						
8	1	26051-080002	NUT M 8	1	1						
9	1	1N1101-52010	WIRE,STOP LEAD	1							
I	9-1	1N3501-52000	WIRE, LEAD	1							S
(A=F018159)											
I	9-2	1N3501-52001	WIRE A,LEAD	1	1						N
(A=FXXXXXX)											
10	1	1N3501-58070	STAY,HANDLE A	1	1						
11	1	1N3501-47030	STAY	2	2						
12	1	26018-080204	BOLT M 8X 20	4	4						
13	1	26367-080002	U-NUT M 8	4	4						
14	1	1N1150-52000	WIRE 550,STOP LEAD	1							1
15	1	1N1291-51030	SWITCH,SAFETY	1							1
I	15-1	1N1291-51031	SWITCH,SAFETY	1							S
(A=F011748)											
I	16	1N3501-47100	HANDLE 1	1							2
I	16-1	1N3501-47101	HANDLE	1	1						S 2
(A=F025875)											
I	17	1N3501-58200	PANEL A,CONTROL	1							2
I	17-1	1N3501-58201	PANEL A,CONTROL	1	1						S 2
(A=F025875)											

Fig.7. TRAVEL LEVER

7. TRAVEL LEVER



NO73090

Remarks

- (1)EXCLUSIVE PART FOR MCG91-PQR
- (2)REF. NO.15 HAS L=23 MM WHILE REF. NO.15-1 HAS L=30 MM.

0CNP2-G94700 7. TRAVEL LEVER

(A)=MCG91(-PQ(R)
(B)=MCG91(-PQ(MC2)
(C)=

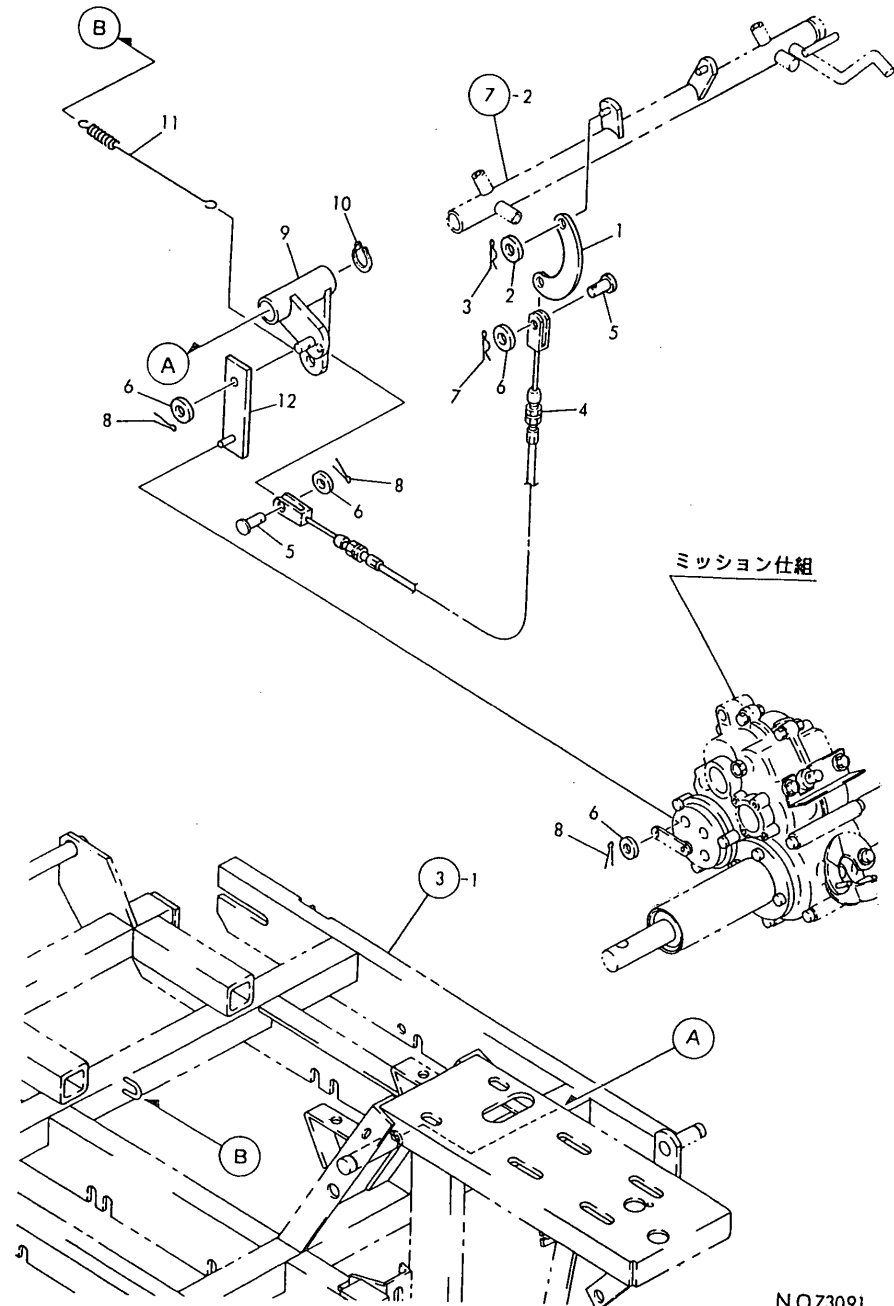
(D)=
(E)=
(F)=

REF.	LEV.	PARTS NO.	DESCRIPTION	QTY						I	R
				(A)	(B)	(C)	(D)	(E)	(F)		
1	1	1N3501-42020	LEVER,CLUTCH BRAKE	1							
2	1	1N3501-42000	LINK,CLUTCH BRAKE	1							
3	1	22360-160000	SNAP PIN 16	2							
4	1	1N1277-42270	HOSE,VINYL	1	1						
5	1	1N3500-44000	GRIP,RED	1							
6	1	22242-000250	CIRCLIP 25S	1	1						
7	1	1N1240-42050	LINK,CRESCENT	1	1						
8	1	22137-080000	WASHER 8, POLISHED	2	2						
9	1	22360-080000	SNAP PIN 8	1	1						
10	1	1N1210-53030	SPRING 21.5X78,TENS.	1	1						
11	1	1N1360-22090	SCREW 8X94,ADJUST	1	1						
12	1	26757-080002	LOCK NUT M 8 PLATED	1	1						
13	1	1N1480-42170	ROD	1	1						
14	1	1N1190-45000	SPRING 11X72.5,TENS.	1	1						
I 15	1	1N3501-42090	LINK,CLUTCH BRAKE(A	1							1
I 15-1	1	1N3501-42091	LINK A,CLUTCH BRAKE	1	1						S 2

(A=F018670)

Fig.8. BRAKE LEVER

8. BRAKE LEVER



(A)=MCG91(-PQ(R)
 (B)=MCG91(-PQ(MC2)
 (C)=

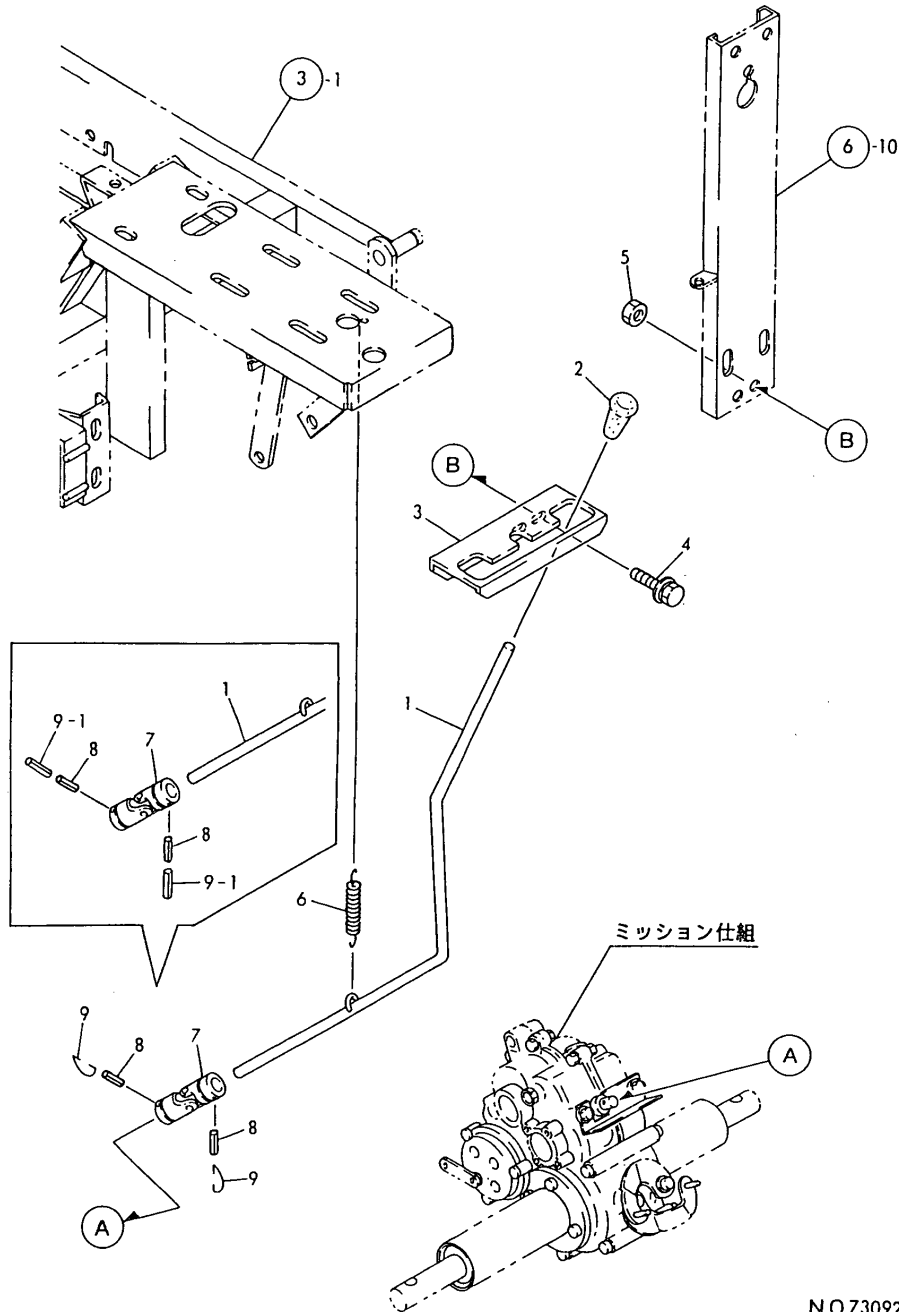
(D)=
 (E)=
 (F)=

REF.	LEV.	PARTS NO.	DESCRIPTION	QTY						I	R
				(A)	(B)	(C)	(D)	(E)	(F)		
1	1	1N1240-42050	LINK,CRESCENT	1	1						
2	1	22137-080000	WASHER 8, POLISHED	1	1						
3	1	22360-080000	SNAP PIN 8	1	1						
4	1	1N3501-51000	WIRE,CONTROL	1	1						
5	1	1N1215-51000	PIN 6X16,RIVET	2	2						
6	1	22137-060000	WASHER 6, POLISHED	4	4						
I 7	1	22361-060000	SNAP PIN 6	1	1						
8	1	22417-200160	COTTER PIN 2.0X16	3	3						
9	1	1N3501-42030	LINK, BRAKE	1	1						
10	1	22242-000160	CIRCLIP 16	1	1						
11	1	1N1293-53000	SPRING,BRAKE RETURN	1							
I 11-1	1	1N1293-53010	SPRING, RETURN	1	1						N
(A=FXXXXXX)											
12	1	1N3500-42130	RODE A,BRAKE	1	1						

NO73091

Fig.9. MAIN CHANGE LEVER

9. MAIN CHANGE LEVER



(A)=MCG91(-PQ(R)
 (B)=MCG91(-PQ(MC2)
 (C)=

(D)=
 (E)=
 (F)=

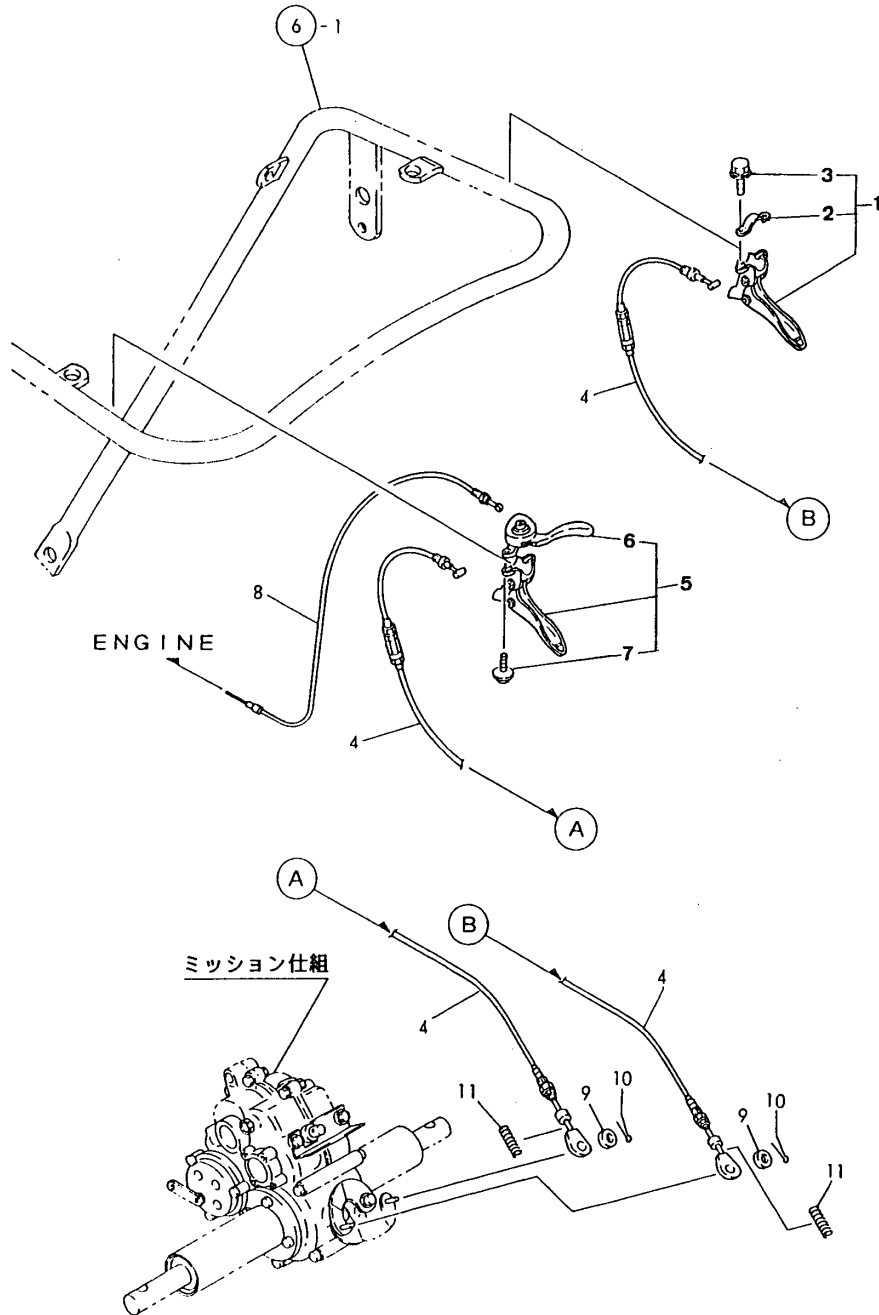
REF.	LEV.	PARTS NO.	DESCRIPTION	QTY						I	R
				(A)	(B)	(C)	(D)	(E)	(F)		
1	1	1N3500-41010	LEVER A,CHANGE	1	1						
2	1	1N1101-44010	GRIP 10,CLUTCH	1	1						
3	1	1N3501-41000	GUIDE A,CHANGE	1	1						
4	1	1N1291-58080	BOLT 6X16 W/P&SW.	2	2						
5	1	26367-060002	NUT M 6	2	2						
6	1	1N1366-53000	SPRING 12.5X34.5,TNS	1	1						
7	1	1N3500-41000	JOINT 12X14,UNIVERSL	1	1						
8	1	22351-050030	SPRING PIN 5X30	2	2						
9	1	1N1185-41010	CIRCLIP,CHANGE	2							
9-1	1	22351-030030	SPRING PIN 3X30	2	2						S
(A=F011135)											

Fig.10. SIDE CLUTCH LEVER

(A)=MCG91(-PQ(R)
(B)=MCG91(-PQ(MC2)
(C)=

(D)=
(E)=
(F)=

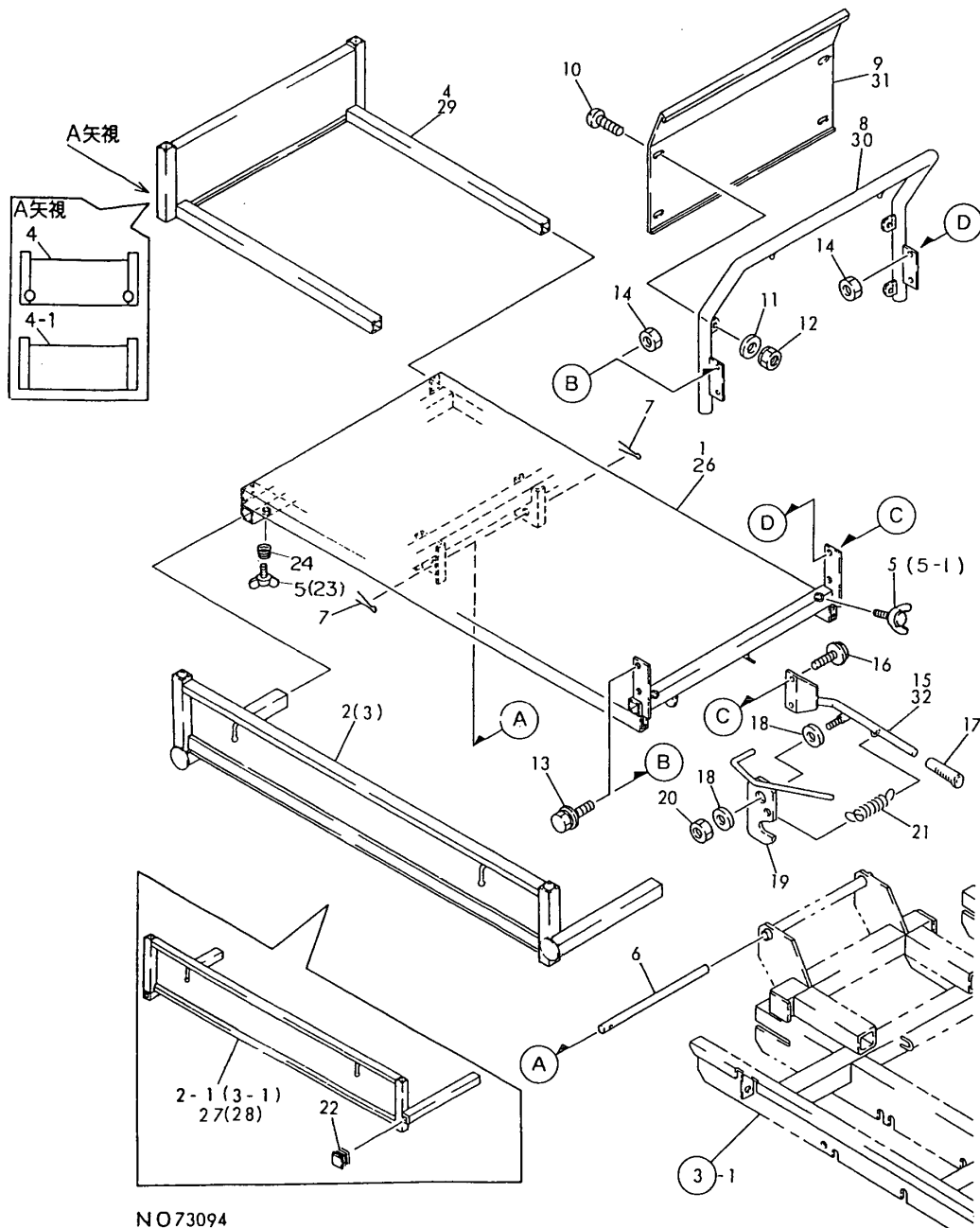
10. SIDE CLUTCH LEVER



REF.	LEV.	PARTS NO.	DESCRIPTION	QTY						I	R	
				(A)	(B)	(C)	(D)	(E)	(F)			
I	1	1	1E4490-51700	LEVER CMP.,SD.CLUTCH	1							
I	1-1	1	1E1140-51040	LEVER	1	1						S
		(A=F026887)	(B=F026887)									
I	2	2	1N3500-51030	BAND 25.4	1							Z
		(A=F026887)										
I	3	2	26014-060259	BOLT 6X25 W/PL.&SP.W	2							
I	3-1	2	26014-060309	BOLT M 6X 30	2	2						S
		(A=F026887)	(B=F026887)									
I	4	1	1N3500-51000	WIRE L,SIDE CLUTCH	2							1
I	4-1	1	1N3500-51001	WIRE, SIDE CLUTCH	2							N
		(A=F025510)										
I	4-2	1	1N3500-51002	WIRE, SIDE CLUTCH	2							N
		(A=FXXXXXX)										
I	4-3	1	1N3500-51003	WIRE, SIDE CLUTCH	2	2						S
		(A=F026887)	(B=F026887)									
I	5	1	1E4490-51730	LEVER R CMP,SD.CLTCH	1							
I	5-1	1	1N3500-51060	LEVER, SIDE CLUTCH	1	1						S
		(A=F026887)	(B=F026887)									
I	6	2	1E4490-51760	LEVER,ACCELERATOR	1	1						
I	7	2	26014-060259	BOLT 6X25 W/PL.&SP.W	2							
I	7-1	1	1N3500-51070	SCREW, M6X35	2	2						S
		(A=F026887)	(B=F026887)									
		8	1N1291-51000	WIRE,THROTTLE	1	1						
		9	22137-060000	WASHER 6, POLISHED	2	2						
		10	22417-200160	COTTER PIN 2.0X16	2	2						
I	11	1	1N1285-42160	SPRING 11X65,COMPRES	2							W 1
		(A=F011660)										
I	11-1	1	1N1285-42160	SPRING 11X65,COMPRES	2							Z
		(A=FXXXXXX)										
I	12	1	7N3500-51000	WIRE,SIDE	2							1
I	12-1	1	7N3500-51001	WIRE,SIDE	2							N
		(A=F025510)										
I	12-2	1	7N3500-51001	WIRE,SIDE	2							Z
		(A=FXXXXXX)										
I	13	1	1N3500-51080	WASHER, SPRING 6	2	2						W
		(A=F026887)										

Fig.11. PLATFORM CARRIER

11. PLATFORM CARRIER



NO73094

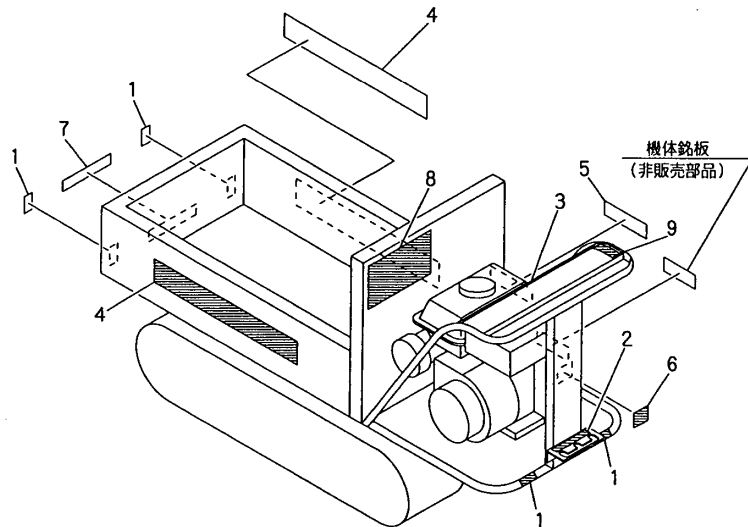
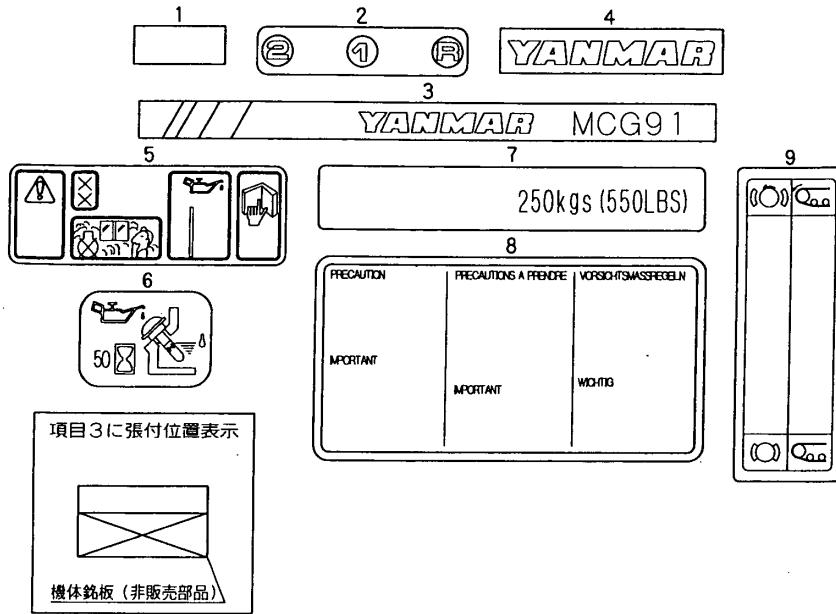
(A)=MCG91(-PQ(R)
(B)=MCG91(-PQ(MC2)
(C)=

(D)=
(E)=
(F)=

REF.	LEV.	PARTS NO.	DESCRIPTION	QTY						I	R
				(A)	(B)	(C)	(D)	(E)	(F)		
1	1	1N3501-64000	CARRIER,PLATFORM	1							
2	1	1N3500-65001	PLATE L,SIDE	1							
2-1	1	1N3500-65002	PLATE L,SIDE	1							S
(A=F010452)											
3	1	1N3500-65011	BOARD R,SIDE	1							
3-1	1	1N3500-65012	SIDE PLATE R	1							S
(A=F010452)											
4	1	1N1291-65240	PLATE,FRONT	1							
4-1	1	1N1291-65241	PLATE,FRONT	1							S
(A=F010452)											
5	1	26647-100202	WING BOLT M10X20	6							
5-1	1	26647-100202	WING BOLT M10X20	2	2						K
(A=FXXXXXX)											
6	1	1N3501-64020	PIN,FULCRUM	1	1						
7	1	22417-400300	COTTER PIN 4.0X30	2	2						
8	1	1N3501-66000	PLATE,BACK	1							
9	1	1N3501-66020	PLATE,BACK	1							
10	1	26557-060162	SCREW M 6X 16	4	4						
11	1	22137-060000	WASHER 6, POLISHED	4	4						
12	1	26051-060002	NUT M 6	4	4						
13	1	26018-080204	BOLT M 8X 20	2	2						
14	1	26367-080002	NUT, 8	4	4						
15	1	1N3501-64010	LEVER,DUNP	1							
16	1	26018-080254	BOLT M 8X 25	2	2						
17	1	1N1101-44000	GRIP,SIDE CLUTCH	1	1						
18	1	22137-120000	WASHER 12,POLISHED	2	2						
19	1	1N3500-64110	LEVER, LOCK	1	1						
20	1	26347-120002	U-NUT M12	1	1						
21	1	1N1151-53000	SPRING 12.5X54,TENS.	1	1						
22	1	1N1520-53020	PLUG 25J,SQUARE OIL	4	4						W
(A=F010452)											
23	1	26647-100302	BOLT 10X30,WING	4	4						W
(A=FXXXXXX)											
24	1	1N1151-53020	SPRING 10.5X25,COMPR	4	4						W
(A=FXXXXXX)											
25	1	1N3504-64000	BAR, BODY SUPPORT	1	1						W
(A=F025875)											
26	1	1N3501-64430	CARRIER	1							W
27	1	1N3501-65090	PLATE L,SIDE	1							W
28	1	1N3501-65080	PLATE R,SIDE	1							W
29	1	1N3501-66150	PLATE,FRONT	1							W
30	1	1N3501-66170	PIPE,BACK	1							W
31	1	1N3501-66180	PLATE,BACK	1							W
32	1	1N3501-64490	LEVER,DUMP	1							W

Fig.12. LABELS

12. LABELS



Remarks
 (1)GROUP NO.12 EXCLUSIVE PARTS
 FOR MCG91-PQ

OCNP2-G94700 12. LABELS

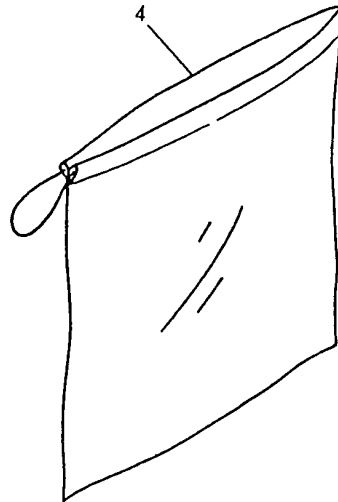
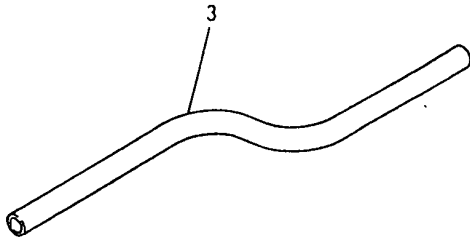
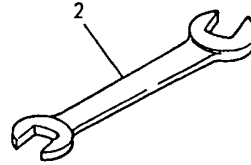
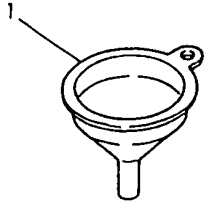
(A)=MCG91(-PQ(R)
 (B)=MCG91(-PQ(MC2
 (C)=

(D)=
 (E)=
 (F)=

REF.	LEV.	PARTS NO.	DESCRIPTION	QTY						I	R
				(A)	(B)	(C)	(D)	(E)	(F)		
I	1	1N1070-93050	TAPE,REFLECTIVE	4							Z
	2	1N3500-93040	LABEL,CHANGE	1							
	3	1N3501-93000	NAMER MCG91,MAIN	1							
	4	1N1313-93030	NAMER,SIDE	2							
	5	1N1362-93060	LABEL,PQ-1	1							
I	6	1N3507-93160	LEVEL,OIL	1							
I	7	1N3500-93160	LABEL	1							
	8	1N1362-93140	LABEL,PQ-9	1							
	9	1N1362-93250	LABEL,PQ-20	1							

Fig.13. TOOLS & ACCESSORIES

13. TOOLS & ACCESSORIES



OCNP2-G94700 13. TOOLS & ACCESSORIES

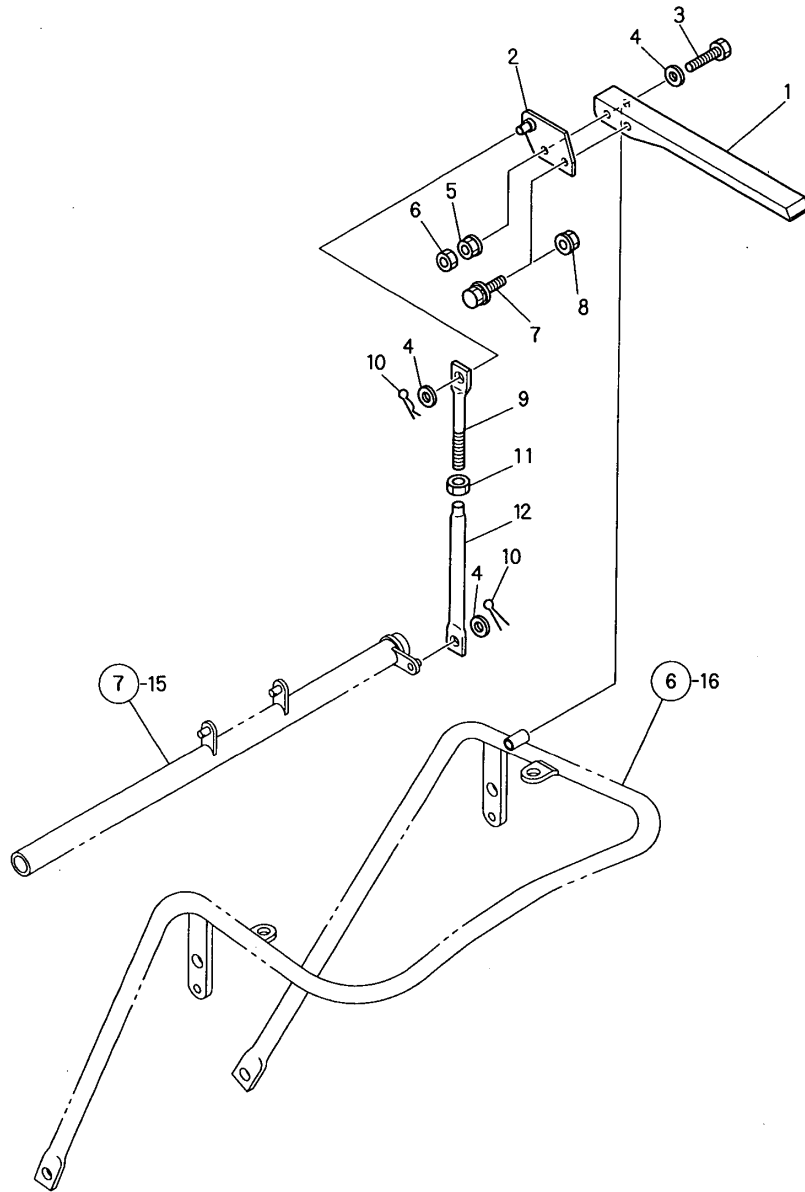
(A)=MCG91(-PQ(R)
(B)=MCG91(-PQ(MC2)
(C)=

(D)=
(E)=
(F)=

REF.	LEV.	PARTS NO.	DESCRIPTION	Q'TY						I	R
				(A)	(B)	(C)	(D)	(E)	(F)		
I	1	1 1N1070-91010 (A=F025431)	FUNNEL	1							Z
I	2	1 1N1070-91050 (A=F025431)	WRENCH 17X19	1							Z
I	3	1 1N1070-91020 (A=F025431)	HOSE	1							Z
I	4	1 1N1070-91090 (A=F025431)	BAG,TOOL	1							Z
I	5	1 1N3501-95100	OPERATION MANUAL	1							
I	5-1	1 1N3501-95101 (A=FXXXXXX)	OPERATION MANUAL	1	1						N
I	5-2	1 1N3501-95102 (A=F027628) (B=F027628)	OPERATION MANUAL	1	1						S

Fig.14. DEADMAN LEVER(ADD.ITEM

14. DEADMAN LEVER(ADD.ITEM



Remarks
 * GROUP NO.14 EXCLUSIVE PARTS
 FOR MCG91-PQR

0CNP2-G94700 14. DEADMAN LEVER(ADD.ITEM

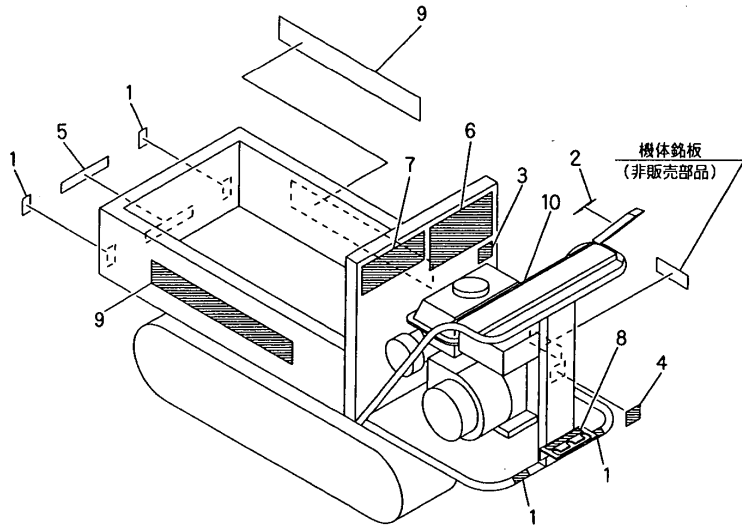
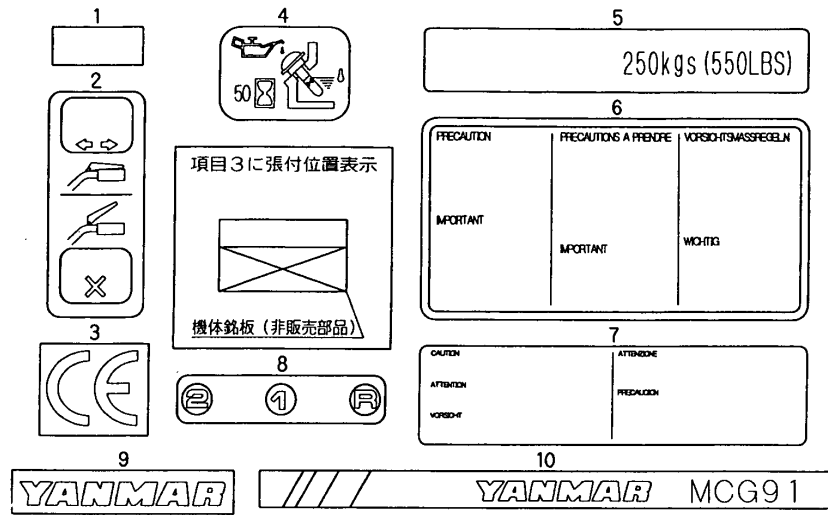
(A)=MCG91(-PQ(R
 (B)=MCG91(-PQ(MC2
 (C)=

(D)=
 (E)=
 (F)=

REF.	LEV.	PARTS NO.	DESCRIPTION	QTY						I	R
				(A)	(B)	(C)	(D)	(E)	(F)		
1	1	1N1723-31360	LEVER,DEADMAN	1	1						
2	1	1N3501-42100	BRACKET A ,LEVER	1	1						
3	1	26116-080552	BOLT 8X55	1	1						
I 4	1	22137-080000	WASHER 8, POLISHED	4	4						
5	1	26347-080002	U-NUT M 8	1	1						
6	1	26757-080002	LOCK NUT M 8 PLATED	1	1						
7	1	26018-080204	BOLT M 8X 20	1	1						
8	1	26367-080002	U-NUT M 8	1	1						
9	1	1N1360-22090	SCREW 8X94,ADJUST	1							
I 9-1	1	1N3506-42160	SCREW M8X60,ADJUST	1	1						S
		(A=F019016)									
I 10	1	22360-080000	SNAP PIN 8	1	1						
11	1	26757-080002	LOCK NUT M 8 PLATED	1	1						
12	1	1N1270-22132	ROD B,CLUTCH CONNECT	1	1						
I 13	1	22417-250200	COTTER PIN 2.5X20	1	1						

Fig.15. LABELS(ADD.ITEM)

15. LABELS(ADD. ITEM)



Remarks
 (1)GROUP NO.15 EXCLUSIVE PARTS
 FOR MCG91-PQR

OCNP2-G94700 15. LABELS(ADD.ITEM)

(A)=MCG91(-PQ(R)
 (B)=MCG91(-PQ(MC2)
 (C)=

(D)=
 (E)=
 (F)=

REF.	LEV.	PARTS NO.	DESCRIPTION	QTY						I	R	
				(A)	(B)	(C)	(D)	(E)	(F)			
I	1	1	1N1070-93050 (A=FXXXXXX)	TAPE,REFLECTIVE	4						Z	
I	2	1	1N3506-93260	LABEL,CLUTCH	1	1						
I	3	1	1N3507-93060 (A=F026282)	DECAL, HYD. CONTROL	1						Z	
I	4	1	1N3507-93160	LEVEL,OIL	1	1						
I	5	1	1N3500-93160	LABEL	1							
I	5-1	1	1N1340-93280 (A=F026454)	LABEL,CARRY CAPACITY	1	1						S
I	6	1	1N1362-93140 (A=F025120)	LABEL,PQ-9	1						Z	
I	7	1	1N3507-93090 (A=F025120)	DECAL, HYD. CONTROL	1						Z	
	8	1	1N3500-93040	LABEL,CHANGE	1	1						
	9	1	1N1313-93030	NAMER,SIDE	2	2						
	10	1	1N3501-93000	NAMER MCG91,MAIN	1	1						
I	11	1	1N3544-93310 (A=F021093)	LABEL	1							W
I	12	1	1N3544-93320 (A=F021093)	LABEL	1							W
I	13	1	1N3544-93330 (A=F021093)	LABEL	1							W
I	14	1	1N3544-93340 (A=F021093)	LABEL	1							W
I	15	1	1N3544-93350 (A=F021093)	LABEL	1							W
I	16	1	1N3544-93360 (A=F025120)	LABEL	1							W
I	17	1	1N3503-93310 (A=FXXXXXX)	LABEL 95DB,NOISE	1	1						W
I	17-1	1	1N3504-93180 (A=F027628) (B=F027628)	LABEL 98DB,NOISE	1	1						S
I	18	1	1N3563-93020 (A=F026282)	LABEL,SAFETY	1	1						W
I	19	1	1N3563-93050 (A=F026282)	LABEL,SAFETY	1	1						W
I	20	1	1N3501-93170 (A=F026983)	MARK	1	1						W

Part Number Index

All parts are stipulated in the order of part numbers.

(Depending on the area in which the part is used.)

This index will display the location of the part according to each part number.

PARTS No. INDEX

PARTS No.	Fig.	Ref.No.
1A1470-40900	6	7
1E1140-51040	10	1 -1
1E4490-51700	10	1
1E4490-51730	10	5
1E4490-51760	10	6
1N1070-91010	13	1
1N1070-91020	13	3
1N1070-91050	13	2
1N1070-91090	13	4
1N1070-93050	12	1
	15	1
1N1091-36000	4	8
	5	8
1N1101-44000	11	17
1N1101-44010	9	2
1N1101-44040	3	2
		2 -1
1N1101-52010	6	9
1N1150-52000	6	14
1N1151-53000	11	21
1N1151-53020	11	24
1N1185-41010	9	9
1N1190-45000	7	14
1N1210-35100	5	15
1N1210-53030	7	10
1N1215-51000	8	5
1N1240-21040	2	9
1N1240-42050	7	7
	8	1
1N1270-22132	14	12
1N1277-42270	7	4
1N1285-42160	10	11
		11 -1
1N1291-22020	2	4
1N1291-35000	5	11
1N1291-35020	5	12
1N1291-37000	4	10
1N1291-51000	10	8
1N1291-51030	6	15
1N1291-51031	6	15 -1
1N1291-58080	3	14
	6	5
	9	4
1N1291-65240	11	4
1N1291-65241	11	4 -1
1N1292-35000	4	3
1N1292-35010	4	4
1N1293-53000	8	11
1N1293-53010	8	11 -1
1N1313-93030	12	4

PARTS No.	Fig.	Ref.No.
1N1313-93030	15	9
1N1340-93280	15	5 -1
1N1360-22090	7	11
	14	9
1N1361-36000	5	3
1N1362-93060	12	5
1N1362-93140	12	8
	15	6
1N1362-93250	12	9
1N1366-53000	9	6
1N1430-22070	1	5
1N1480-42170	7	13
1N1520-53020	11	22
1N1550-54100	3	9
1N1723-31360	14	1
1N3500-41000	9	7
1N3500-41010	9	1
1N3500-42130	8	12
1N3500-44000	7	5
1N3500-51000	10	4
1N3500-51001	10	4 -1
1N3500-51002	10	4 -2
1N3500-51003	10	4 -3
1N3500-51030	10	2
1N3500-51060	10	5 -1
1N3500-51070	10	7 -1
1N3500-51080	10	13
1N3500-54090	3	12
1N3500-58130	3	3
1N3500-64110	11	19
1N3500-65001	11	2
1N3500-65002	11	2 -1
1N3500-65011	11	3
1N3500-65012	11	3 -1
1N3500-93040	12	2
	15	8
1N3500-93160	12	7
	15	5
1N3501-21000	2	1
1N3501-21010	2	3
1N3501-22000	1	1
1N3501-31000	3	1
1N3501-35020	4	4 -1
	5	4 -1
1N3501-35030	5	15 -1
1N3501-35040	4	3 -1
1N3501-36010	5	3 -1
1N3501-37000	4	12
1N3501-37010	4	12 -1
1N3501-41000	9	3

PARTS No.	Fig.	Ref.No.
1N3501-42000	7	2
1N3501-42020	7	1
1N3501-42030	8	9
1N3501-42090	7	15
1N3501-42091	7	15 -1
1N3501-42100	14	2
1N3501-47000	6	1
1N3501-47000-1	6	1 -1
1N3501-47030	6	11
1N3501-47100	6	16
1N3501-47101	6	16 -1
1N3501-51000	8	4
1N3501-52000	6	9 -1
1N3501-52001	6	9 -2
1N3501-54000	3	8
1N3501-54001	3	8 -1
1N3501-54002	3	8 -2
1N3501-54030	3	16
1N3501-54040	3	17
1N3501-54041	3	17 -1
1N3501-58000	6	4
1N3501-58041	3	7
1N3501-58070	6	10
1N3501-58090	3	4
1N3501-58120	3	13
1N3501-58200	6	17
1N3501-58201	6	17 -1
1N3501-58300	3	7 -1
1N3501-64000	11	1
1N3501-64010	11	15
1N3501-64020	11	6
1N3501-64430	11	26
1N3501-64490	11	32
1N3501-65080	11	28
1N3501-65090	11	27
1N3501-66000	11	8
1N3501-66020	11	9
1N3501-66150	11	29
1N3501-66170	11	30
1N3501-66180	11	31
1N3501-93000	12	3
	15	10
1N3501-93170	15	20
1N3501-95100	13	5
1N3501-95101	13	5 -1
1N3501-95102	13	5 -2
1N3503-93310	15	17
1N3504-64000	11	25
1N3504-93180	15	17 -1
1N3506-42160	14	9 -1

PARTS No.	Fig.	Ref.No.
1N3506-93260	15	2
1N3507-93060	15	3
1N3507-93090	15	7
1N3507-93160	12	6
	15	4
1N3510-35010	5	4
1N3544-93310	15	11
1N3544-93320	15	12
1N3544-93330	15	13
1N3544-93340	15	14
1N3544-93350	15	15
1N3544-93360	15	16
1N3563-93020	15	18
1N3563-93050	15	19
7N1292-35000	4	2
7N1292-35010	4	1
7N3500-51000	10	12
7N3500-51001	10	12 -1
		12 -2
7N3501-35000	4	2 -1
7N3501-35010	4	1 -1
7N3501-36000	5	2 -1
7N3501-36010	5	1 -1
7N3510-36000	5	2
7N3510-36010	5	1



YANMAR CO.,LTD.



PARTS CATALOG

Published

2008/8 (Aug.)

0CNP2-G55400

Directions for the Parts Catalog.

- 1.The parts stipulated in this Parts Catalog are not necessarily standard equipped parts.
- 2.Parts may change without prior notice.
- 3.The following is an example of the Parts Catalog format.

OCF10-G216100 29. FUEL INJECTION PUMP				(A)=4JH-DT	(D)=4JH-DTZA				
① REF.	② LEV.	PARTSNo.	DESCRIPTION	(B)=4JH-DTZ	(E)=4JH-DTZY	(C)=4JH-DTZP	(F)=		
				QTY					
				(A)	(B)	(C)	(D)	(E)	(F)
1		729595-51390	FUEL INJECTION PUMP	1	1	1	1	1	1
1-1	1	729595-51391	FUEL INJECTION PUMP	1	1	1	1	1	1
		(A=E00185) (B=E00200)							
3	2	26022-060162	SCREW M 6X16	9	9	9	9	9	
3-1	2	26022-060162	SCREW M 6X16	4	4	4	4	4	K
		(A=E00156) (B=E00156) (C=E00156) (D=E00156) (E=E00156)							
4	2	129470-51040	CAMSHIFT	9	9	9	9	9	
5	2	122710-51050	BEARING. ROLLER	9	9	9	9	9	
6	2	129470-51060	RETAINER	9	9	9	9	9	

Remarks	
(1)	BOOST COMPEMSATOR TYPE. OPTIONAL PART. TO E/#00155 (4JH-DT, 4JH-DTZ)

①Ref. No.

The Ref. No. listed may not be in accordance with the illustration Ref. No.

(Ex.) Illustration No. List Ref No.

1 1 (Before change) → 1-1 (After change)

For interchangeable symbols N, R and K, illustrations for new parts may be abbreviated.

②Lev. (Level)

Level indication

The numbers below indicate the level of relativity towards the main part.

- 1 ---- Main parts (Assembly parts)
- 2 ---- Sub component included in " 1 "
- 3 ---- Sub component included in " 2 "

Note) Parts that are not for sale are partially illustrated but not listed.

③Change Mark

The "I" indicates parts that were newly changed.

④Interchangeability Mark

When a part change takes place, one of the following interchangeability symbols is indicated beside the part.

Symbol	Interchangeability	Contents note
N	Old $\begin{matrix} \leftarrow \text{Yes} \\ \text{No} \rightarrow \end{matrix}$ New	New Part is interchangeable for Old Part but Old Part is not interchangeable for New Part.
Q	Old $\begin{matrix} \text{No} \leftarrow \\ \text{Yes} \rightarrow \end{matrix}$ New	New Part is not interchangeable for Old Part but Old Part is interchangeable for New Part.
R	Old $\begin{matrix} \leftarrow \text{Yes} \\ \text{Yes} \rightarrow \end{matrix}$ New	New/ Old Parts are both interchangeable.
S	Old $\begin{matrix} \text{No} \leftarrow \\ \text{No} \rightarrow \end{matrix}$ New	New/ Old Parts are both not interchangeable.
W		Part discontinued.
Z		Part newly added.
F		Not interchangeable by a single part but interchangeable together with related parts.
K		Changes only for used parts quantities.

⑤Effective Machine No.

When a part changes, the effective Machine No. will be indicated in the (A)-(F) column.

Product Symbol	Product No.	Product Symbol	Product No.
C	Clutch No. Compressor No.	F	Machine No. (Agricultural Equip.)
D	Drive No.	M	Machine No.
E	Engine No.	Note 1)	Date

Note 1) A date may follow the symbol. (Ex.) 1996.01

Note 2) " XXX " are for parts that could not be predicted or for engine models that could not be identified.

Note 3) (A=E/#00185) is the E/# (Engine Serial Number) for the column (A) model (in this case 4JH-DT) after the parts design change.

⑥Remarks Mark

Figures or alphabets (symbols) are entered in the remarks column.

The comments (remarks) on parts that are indicated at the bottom of the illustration are the same symbols as those stated above.

CONTENTS

MODEL : MCG91 N2534,2997

PC NO : 0CNP2-G55400

Fig.No. GROUP NAME

TRAVELING SECTION(2)

1. TRANSMISSION CASE
2. MAIN SHAFT
3. TRANSMISSION SHAFT
4. SIDE CLUTCH SHAFT
5. AXLE
6. BRAKE
7. SIDE CLUTCH
8. MAIN CHANGE

Fig.No. GROUP NAME

Fig.1. TRANSMISSION CASE

(A)=FT25-7FA

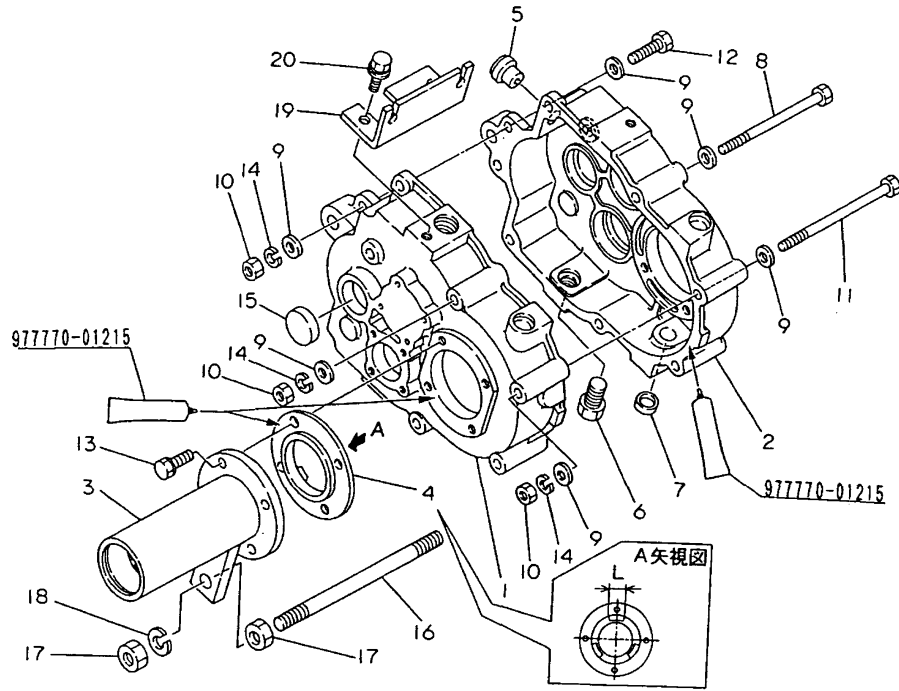
(B)=

(C)=

(D)=

(E)=

(F)=



REF.	LEV.	PARTS NO.	DESCRIPTION	QTY						I	R
				(A)	(B)	(C)	(D)	(E)	(F)		
1	1	1N3500-24000	CASE L, TRANSMISSION	1							
2	1	1N3500-24010	CASE R, TRANSMISSION	1							
2-1	1	1N3500-24011	CASE R, TRANSMISSION	1							S 1
(A=M910418)											
3	1	1N1296-24001	HOLDER.AXLE	2							
4	1	1N1296-24013	PAWL,CLUTCH	2							
I 4-1	1	1N1296-24014	CLUTCH NAIL	2							S 2
(A=M923171)											
5	1	1N1291-24070	PLUG,HOLED OIL	1							
6	1	1N1291-24040	PLUG M14,DRAIN	1							
6-1	1	1N1530-24230	PLUG PT1/4	1							S
(A=M910418)											
7	1	1N1430-24080	CAP,SEAL	2							
8	1	26117-081102	BOLT M 8X110 PLATED	2							
9	1	22137-080000	WASHER 8, POLISHED	16							
10	1	26717-080002	NUT 8	8							
11	1	26117-081202	BOLT M 8X120 PLATED	2							
12	1	26117-080302	BOLT M 8X 30	4							
13	1	26016-080254	BOLT M 8X 25	8							
14	1	22217-080000	SPRING WASHER 8	8							
15	1	1N1430-24000	PLUG, BLIND	1							
16	1	1N1296-24020	SCREW M12X180	1							
17	1	26717-120002	NUT M12	4							
18	1	22217-120000	SPRING WASHER 12	2							
19	1	1N3500-24030	BRACKET, OUTER	1							
20	1	26018-080164	BOLT M 8X 16	2							

Remarks
 *P/#7N3501-20000 TRANSMISSION ASY.
 (1)REF. NO.2 IS A DRAIN PLUG WITH HOLE OF M14 WHILE REF. NO.2-1 IS A DRAIN PLUG PT1/4.
 (2)L=REF.NO.4 18M/M,4-1 13M/M.

Fig.2. MAIN SHAFT

0CNP2-G55400 2. MAIN SHAFT

(A)=FT25-7FA
(B)=
(C)=

(D)=
(E)=
(F)=

REF.	LEV.	PARTS NO.	DESCRIPTION	QTY						I	R
				(A)	(B)	(C)	(D)	(E)	(F)		
1	1	1N1291-25310	SHAFT KW2,INPUT	1							
2	1	1N1291-25010	GEAR 16-27	1							
3	1	24421-173007	SEAL TC17 30 07, OIL	1							
4	1	24101-060034	BALL BEARING	1							
5	1	1N1430-25090	COLLAR	1							
6	1	24101-062024	BALL BEARING	1							

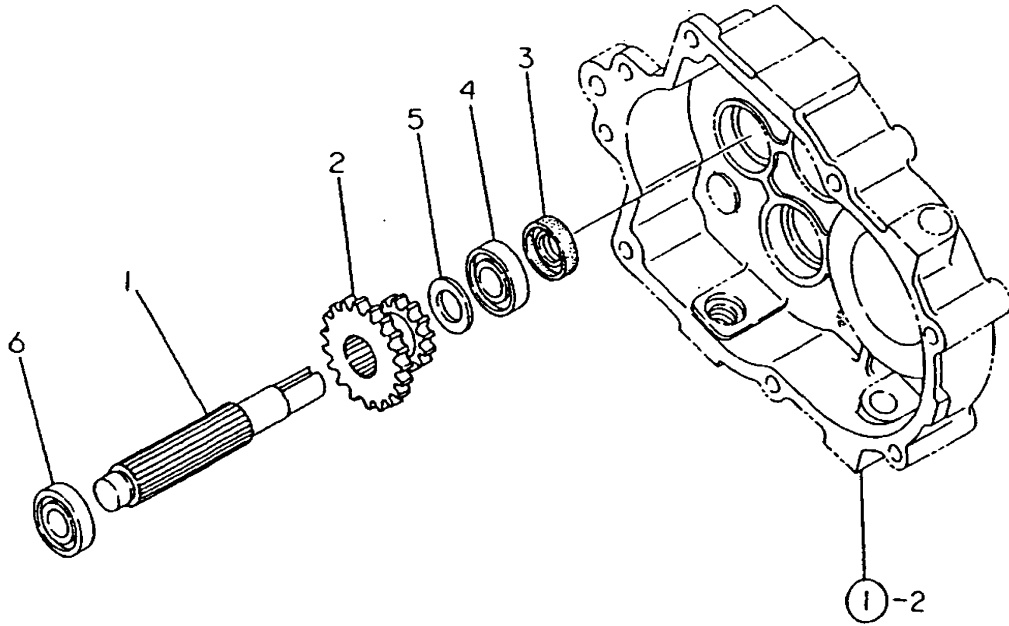
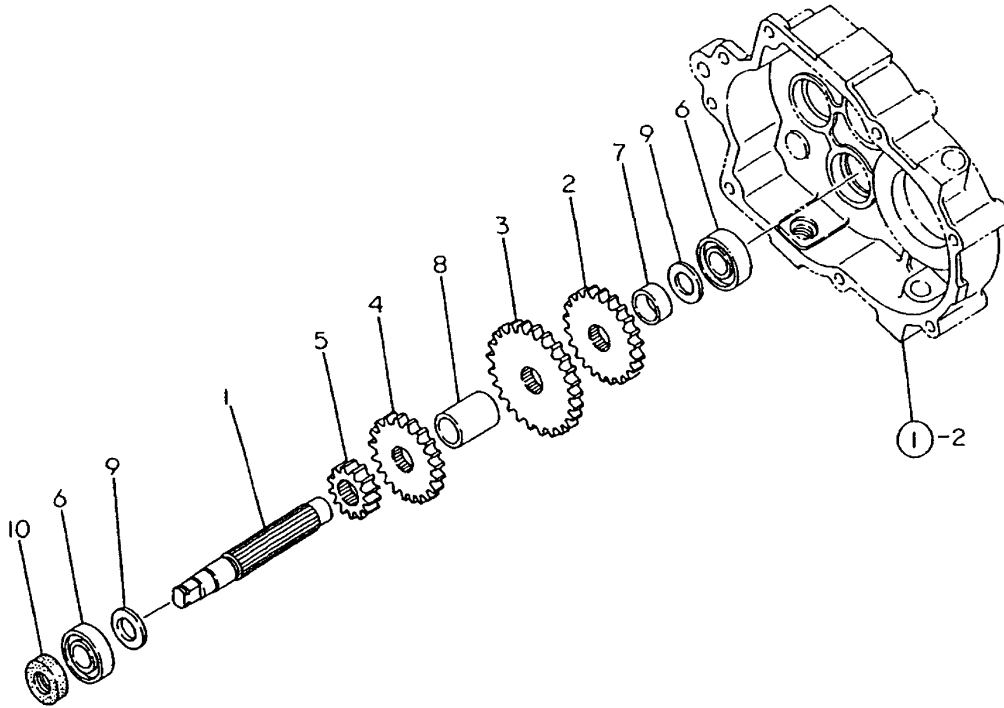


Fig.3. TRANSMISSION SHAFT

0CNP2-G55400 3. TRANSMISSION SHAFT

(A)=FT25-7FA
(B)=
(C)=

(D)=
(E)=
(F)=



REF.	LEV.	PARTS NO.	DESCRIPTION	QTY						I	R
				(A)	(B)	(C)	(D)	(E)	(F)		
1	1	1N1296-25000	SHAFT,2ND	1							
2	1	1N1291-25340	GEAR 28	1							
3	1	1N1296-25020	GEAR 41	1							
4	1	1N1296-25030	GEAR 30	1							
5	1	1N1291-25040	GEAR 16	1							
6	1	24101-062034	BALL BEARING	2							
7	1	1N1291-25050	COLLAR 20.5X26X11	1							
8	1	1N1291-25060	COLLAR 20.2X27.2X33	1							
9	1	1N1430-25090	COLLAR	2							
10	1	24421-173507	SEAL TC17 35 07, OIL	1							

Fig.4. SIDE CLUTCH SHAFT

0CNP2-G55400 4. SIDE CLUTCH SHAFT

(A)=FT25-7FA
(B)=
(C)=

(D)=
(E)=
(F)=

REF.	LEV.	PARTS NO.	DESCRIPTION	QTY						I	R
				(A)	(B)	(C)	(D)	(E)	(F)		
1	1	1N1291-25070	SHAFT COMP.,3RD	1							
2	1	1N1291-25350	GEAR 26/41T	1							
3	1	24101-062034	BALL BEARING	2							
4	1	22242-000170	CIRCLIP 17	1							
5	1	1N1430-25090	COLLAR	3							
6	1	1N1291-25080	BUSH 1715	1							

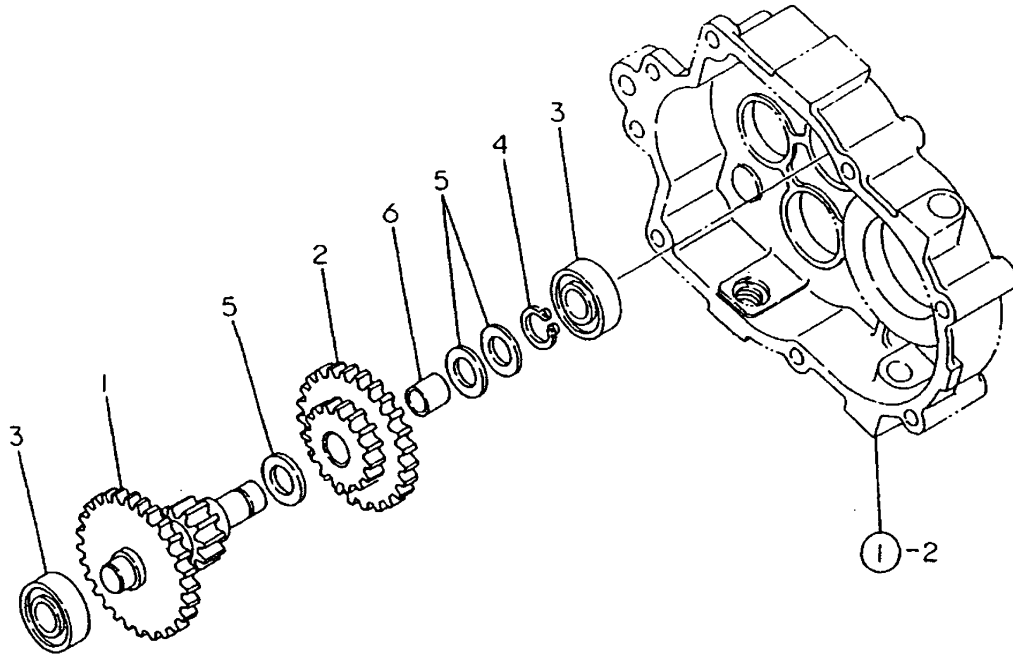


Fig.5. AXLE

(A)=FT25-7FA

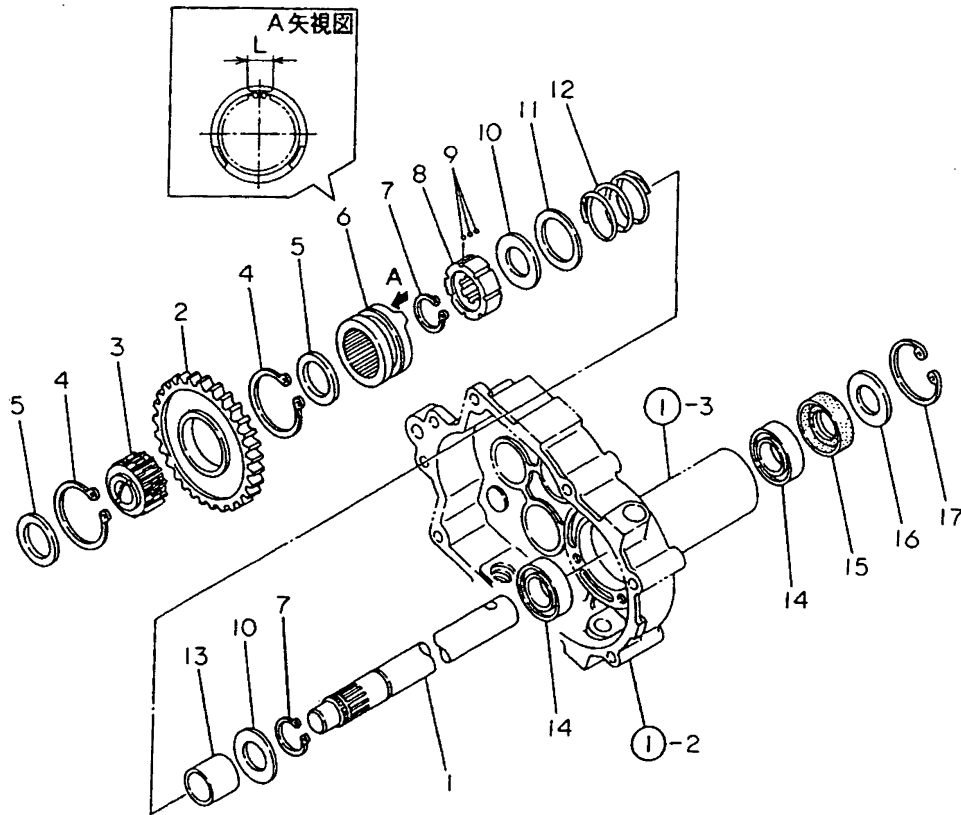
(B)=

(C)=

(D)=

(E)=

(F)=



REF.	LEV.	PARTS NO.	DESCRIPTION	QTY						I	R
				(A)	(B)	(C)	(D)	(E)	(F)		
1	1	1N1291-25090	AXLE	2							
2	1	1N1291-25100	GEAR 44	1							
3	1	1N1291-25110	GEAR 28,CLUTCH	1							
4	1	22242-000500	CIRCLIP 50	2							
5	1	1N1291-25120	PLATE,BALL SUPPORTG	2							
6	1	1N1291-25134	GEAR 28,SIDE CLUTCH	2							
I	6-1	1	1N1291-25135	GEAR 28,SIDE CLUTCH	2						S 1
		(A=M923171)									
7	1	22242-000250	CIRCLIP 25S	4							
8	1	1N1291-25140	BOSS,DRIVE	2							
9	1	1N1291-25150	BALL 4,STEEL	42							
10	1	1N1291-25160	LINER 2.0X25.5X46	4							
11	1	1N1291-25170	LINER 2.0X35.5X50	2							
12	1	1N1291-25180	SPRING,CLUTCH	2							
13	1	1N1291-25190	COLLAR 25.2X31.8X27.	2							
14	1	24101-060054	BALL BEARING 6005	4							
15	1	24421-254708	SEAL TC25 47 08, OIL	2							
16	1	1N1291-25200	COVER,OIL SEAL	2							
17	1	22252-000470	CIRCLIP 47(H)	2							

Remarks

(1)L=REF.NO.6 18M/M,6-1 13M/M.

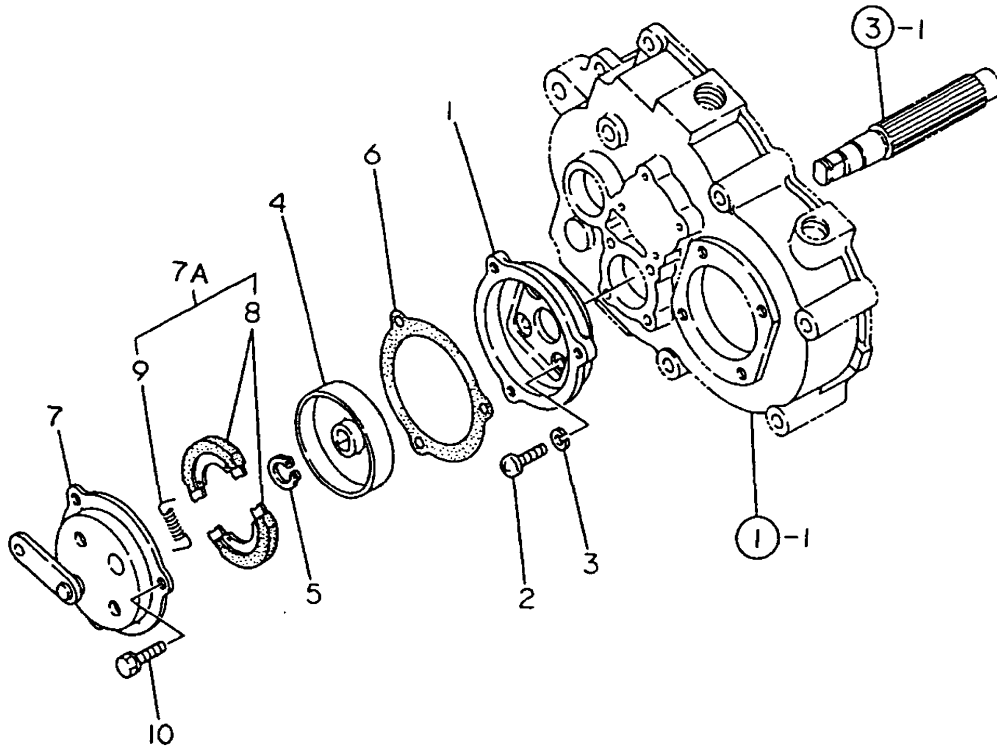
N:Old $\xrightarrow{\text{Yes}}$ New, Q:Old $\xrightarrow{\text{No}}$ New, R:Old $\xrightarrow{\text{Yes}}$ New, S:Old $\xrightarrow{\text{No}}$ New, W:Add, Z:Discontinued, F:Interchangeable by set, K:Q'ty Change

Fig.6. BRAKE

0CNP2-G55400 6. BRAKE

(A)=FT25-7FA
(B)=
(C)=

(D)=
(E)=
(F)=



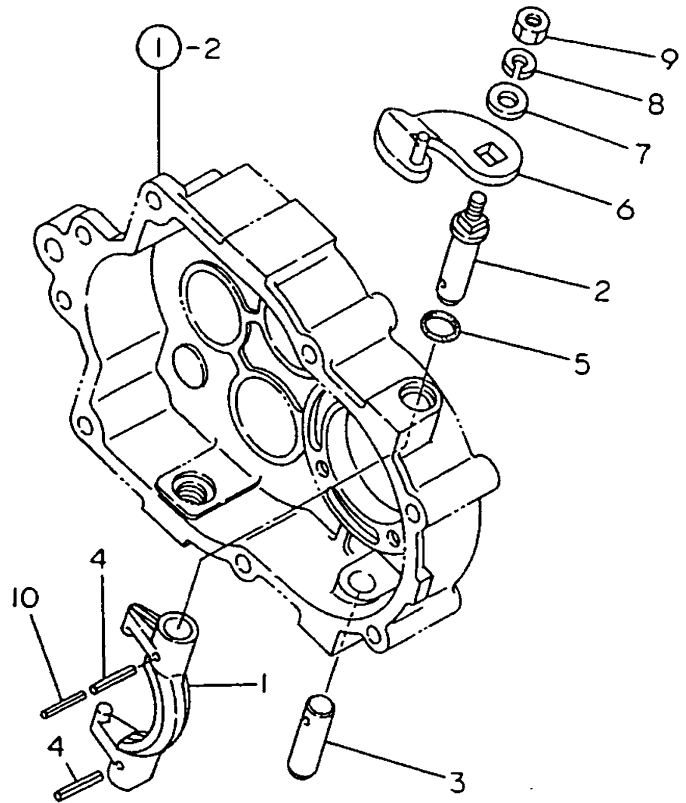
REF.	LEV.	PARTS NO.	DESCRIPTION	QTY						I	R
				(A)	(B)	(C)	(D)	(E)	(F)		
1	1	1N1296-25040	MOUNT,BRAKE	1							
2	1	26557-060162	SCREW M 6X 16	4							
3	1	22217-060000	SPRING WASHER 6	4							
4	1	1N1291-25220	DRUM,BRAKE	1							
5	1	22242-000140	CIRCLIP 14	1							
6	1	1N1291-25230	PACKING,BRAKE PLATE	1							
I	7	1N1291-25240	PLATE COMP.,BRAKE	1							
I	7A	7N1291-25010	BRAKE SHOE ASSY.	1							
I	8	1N1291-25250	SHOE,BRAKE	2							
I	9	1N1291-25260	SPRING,BRAKE SHOE	2							
10	1	26016-060124	BOLT 6X12 W/L.W.	3							

Fig.7. SIDE CLUTCH

0CNP2-G55400 7. SIDE CLUTCH

(A)=FT25-7FA
(B)=
(C)=

(D)=
(E)=
(F)=

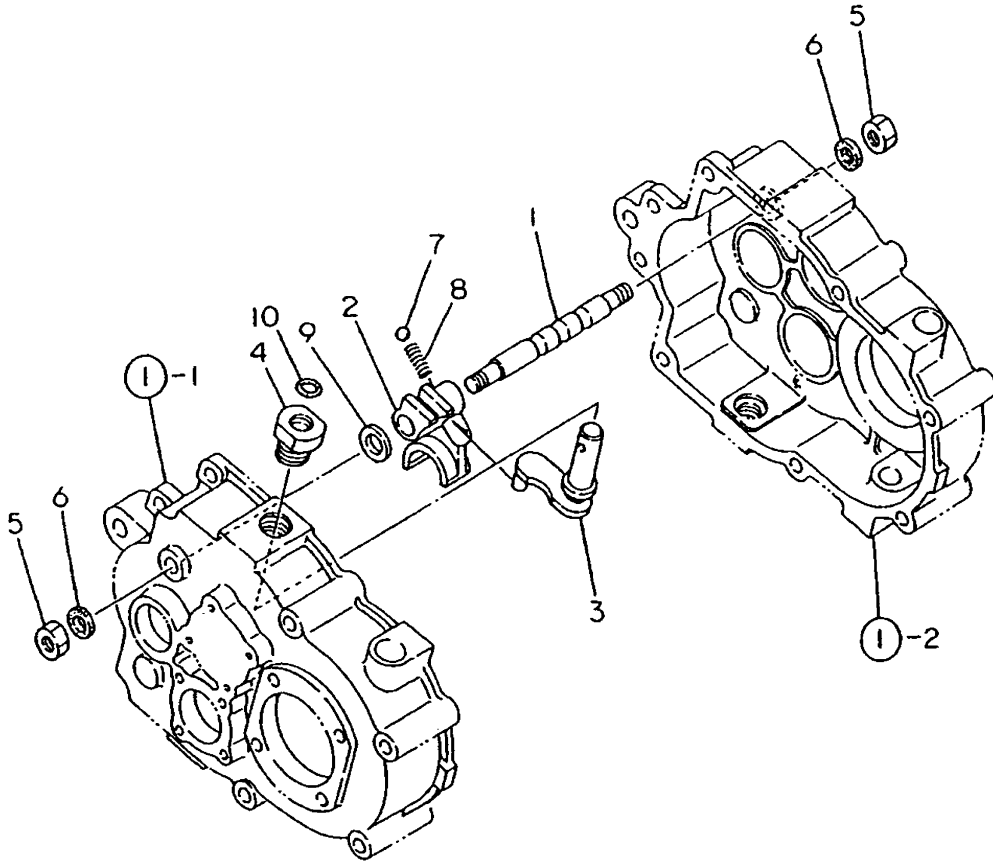


REF.	LEV.	PARTS NO.	DESCRIPTION	QTY						I	R
				(A)	(B)	(C)	(D)	(E)	(F)		
1	1	1N1296-25050	SHIFTER,SIDE CLUTCH	2							
2	1	1N1296-25060	PIN,SHIFT LEVER UPPR	2							
3	1	1N1296-25070	PIN,SHIFT LEVER LOWR	2							
4	1	22351-050025	SPRING PIN 5X25	4							
5	1	24311-000140	O-RING 1A P-14.0	2							
6	1	1N1291-25300	LEVER,SIDE CLUTCH	2							
I 6-1	1	1N1291-25301	SIDE CLUTCH LEVER	2							S
		(A=F025510)									
7	1	22137-080000	WASHER 8, POLISHED	2							
8	1	22217-080000	SPRING WASHER 8	2							
9	1	26717-080002	NUT 8	2							
I 10	1	22351-030025	SPRING PIN 3X25	2							W
		(A=MXXXXXX)									

Fig.8. MAIN CHANGE

(A)=FT25-7FA
(B)=
(C)=

(D)=
(E)=
(F)=



REF.	LEV.	PARTS NO.	DESCRIPTION	QTY						I	R
				(A)	(B)	(C)	(D)	(E)	(F)		
1	1	1N1291-26000	ROD,SHIFTER	1							
2	1	1N1291-26010	SHIFTER,GEAR	1							
3	1	1N1291-26020	LEVER,SHIFT	1							
4	1	1N1291-26030	GUIDE,SHIFT LEVER	1							
5	1	26717-100002	NUT M10	2							
6	1	1N1430-26030	WASHER,SEAL	2							
7	1	1N1150-25010	BALL 8,STEEL	1							
8	1	1N1291-26040	SPRING,FORK	1							
9	1	1N1291-26050	LINER 2.3X22X13.5	1							Z
(A=MXXXXXX)											
10	1	24311-000140	O-RING 1A P-14.0	1							

Part Number Index

All parts are stipulated in the order of part numbers.

(Depending on the area in which the part is used.)

This index will display the location of the part according to each part number.

PARTS No. INDEX

PARTS No.	Fig.	Ref.No.
1N1150-25010	8	7
1N1291-24040	1	6
1N1291-24070	1	5
1N1291-25010	2	2
1N1291-25040	3	5
1N1291-25050	3	7
1N1291-25060	3	8
1N1291-25070	4	1
1N1291-25080	4	6
1N1291-25090	5	1
1N1291-25100	5	2
1N1291-25110	5	3
1N1291-25120	5	5
1N1291-25134	5	6
1N1291-25135	5	6 -1
1N1291-25140	5	8
1N1291-25150	5	9
1N1291-25160	5	10
1N1291-25170	5	11
1N1291-25180	5	12
1N1291-25190	5	13
1N1291-25200	5	16
1N1291-25220	6	4
1N1291-25230	6	6
1N1291-25240	6	7
1N1291-25250	6	8
1N1291-25260	6	9
1N1291-25300	7	6
1N1291-25301	7	6 -1
1N1291-25310	2	1
1N1291-25340	3	2
1N1291-25350	4	2
1N1291-26000	8	1
1N1291-26010	8	2
1N1291-26020	8	3
1N1291-26030	8	4
1N1291-26040	8	8
1N1291-26050	8	9
1N1296-24001	1	3
1N1296-24013	1	4
1N1296-24014	1	4 -1
1N1296-24020	1	16
1N1296-25000	3	1
1N1296-25020	3	3
1N1296-25030	3	4
1N1296-25040	6	1
1N1296-25050	7	1
1N1296-25060	7	2
1N1296-25070	7	3
1N1430-24000	1	15

PARTS No.	Fig.	Ref.No.
1N1430-24080	1	7
1N1430-25090	2	5
	3	9
	4	5
1N1430-26030	8	6
1N1530-24230	1	6 -1
1N3500-24000	1	1
1N3500-24010	1	2
1N3500-24011	1	2 -1
1N3500-24030	1	19
7N1291-25010	6	7 A

PARTS No.	Fig.	Ref.No.
-----------	------	---------

PARTS No.	Fig.	Ref.No.
-----------	------	---------



YANMAR CO.,LTD.



PARTS CATALOG

Published

2008/7 (Jul.)

0CNP2-G63200

CONTENTS

MODEL : GA90E-SCKN(N2534

PC NO : 0CNP2-G63200

Fig.No. GROUP NAME
ENGINE UNIT(GA90E-SCKN)

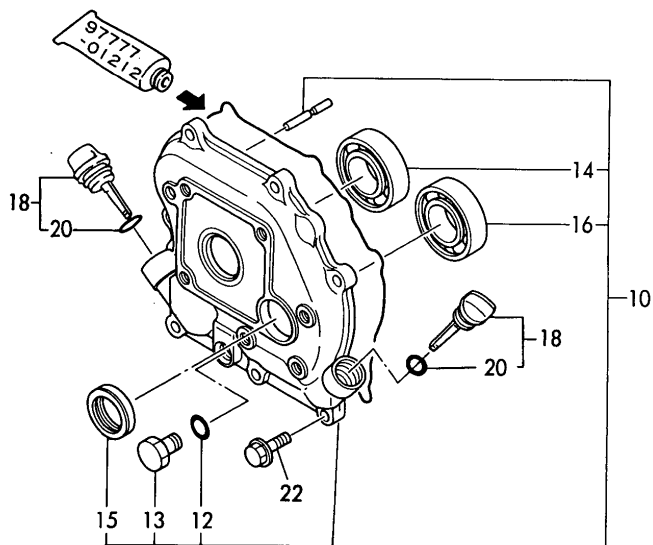
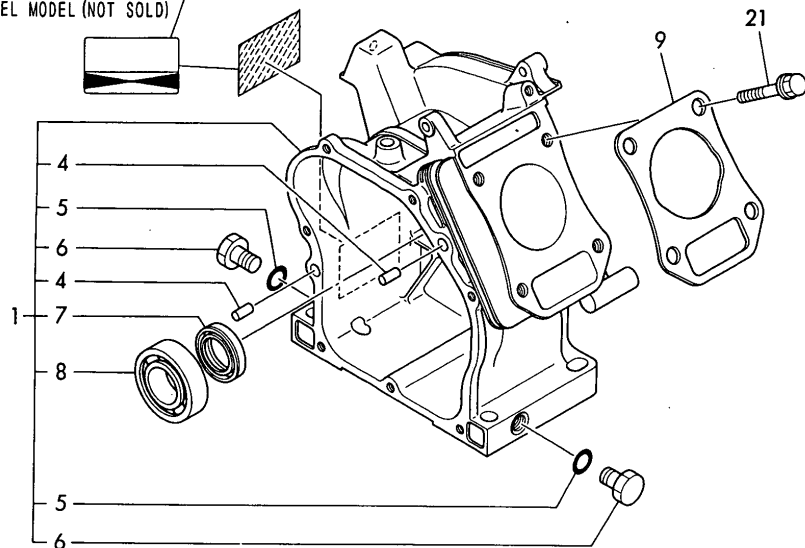
1. CYLINDER BLOCK
2. CYLINDER HEAD & BONNET
3. TOOL & LABEL
4. AIR CLEANER & MUFFLER
5. CRANKSHAFT,PISTON & CAMSHAFT
6. FUEL OIL TANK & FUEL OIL LINE
7. CARBURETOR
8. GOVERNOR & CONTROL DEVICE
9. FLY.MAGNET & STARTING DEVICE

Fig.No. GROUP NAME

Fig.1. CYLINDER BLOCK

1. CYLINDER BLOCK

機体銘板 (非販売部品)
LABEL MODEL (NOT SOLD)



N075342

Remarks
(REMARKS)"EFFECTIVE MACHINE NO." OF
ENGINE IS INDICATED ON THE
ENGINE LABEL WHICH IS SHOWN
IN FIG.1.

OCNP2-G63200 1. CYLINDER BLOCK

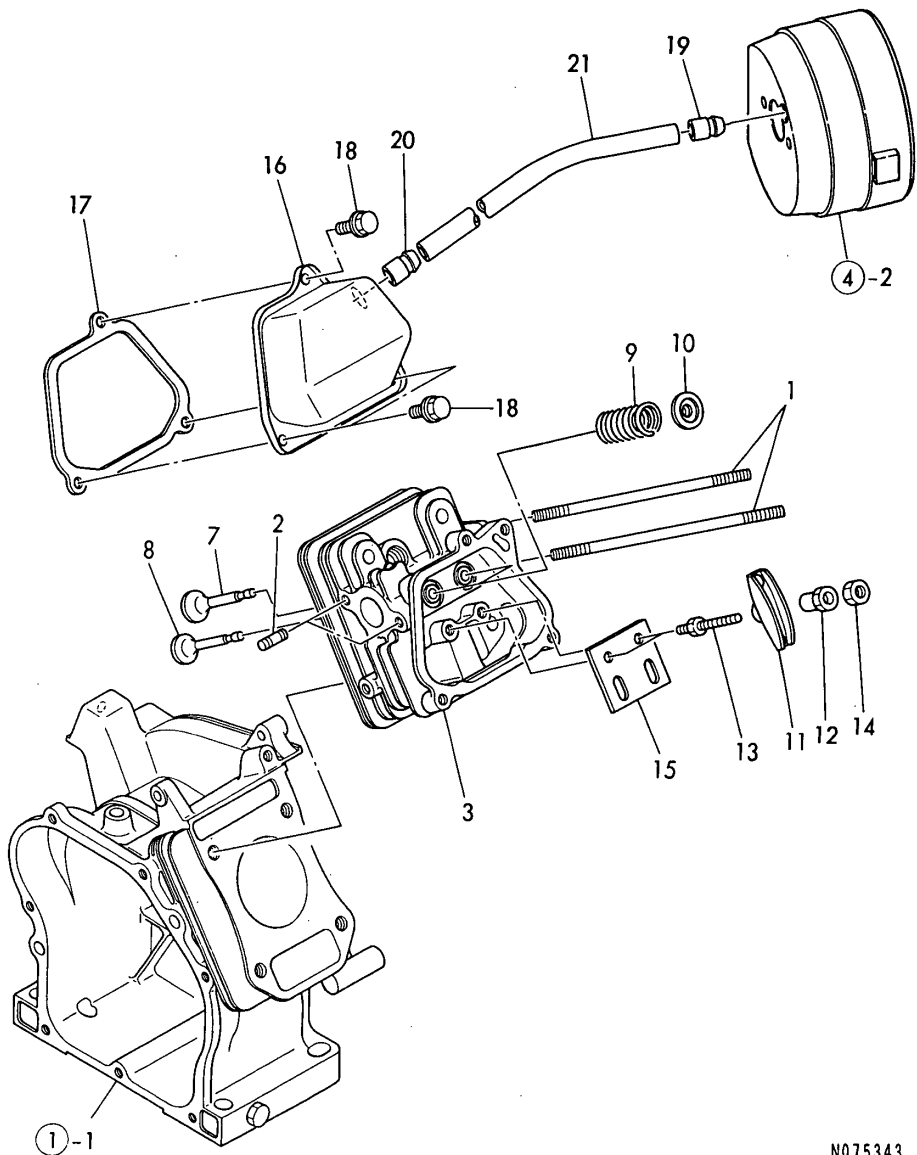
(A)=GA90E-SCKN
(B)=
(C)=

(D)=
(E)=
(F)=

REF.	LEV.	PARTS NO.	DESCRIPTION	QTY						I	R
				(A)	(B)	(C)	(D)	(E)	(F)		
1	1	760490-01560	BLOCK ASSY, CYLINDER	1							
4	2	22312-080120	PARALLEL PIN 8X12	2							
I 4-1	2	114270-01600	PARALLEL PIN 8X12	2							R
(A=E091603)											
5	2	24311-000100	O-RING 1A P-10.0	2							
6	2	26106-100162	BOLT M10X 16 PLATED	2							
7	2	160510-02220	SEAL, OIL	1							
8	2	24101-062030	BALL BEARING	1							
9	1	160490-01330	GASKET	1							
10	1	760490-01500	COVER,CRANKCASE	1							
12	2	24311-000100	O-RING 1A P-10.0	1							
13	2	26106-100162	BOLT M10X 16 PLATED	1							
14	2	24101-062030	BALL BEARING	1							
15	2	160510-02220	SEAL, OIL	1							
16	2	24101-062030	BALL BEARING	1							
18	1	160611-01740	CAP ASSY	2							
20	2	24311-000150	O-RING 1A P-15.0	2							
21	1	160610-04201	BOLT M 8X 53	4							
22	1	26476-060202	BOLT M 6X 20,TAPPING	7							

Fig.2. CYLINDER HEAD & BONNET

2. CYLINDER HEAD & BONNET



N075343

Remarks
 (REMARKS)"EFFECTIVE MACHINE NO." OF
 ENGINE IS INDICATED ON THE
 ENGINE LABEL WHICH IS SHOWN
 IN FIG.1.

OCNP2-G63200 2. CYLINDER HEAD & BONNET

(A)=GA90E-SCKN
 (B)=
 (C)=

(D)=
 (E)=
 (F)=

REF.	LEV.	PARTS NO.	DESCRIPTION	QTY						I	R
				(A)	(B)	(C)	(D)	(E)	(F)		
1	1	160610-04570	BOLT M 6X 70	2							
2	1	160610-04620	BOLT M6X 16	2							
3	1	160490-11010	HEAD ASSY, CYLINDER	1							
7	1	160664-11100	INLET VALVE	1							
8	1	160664-11110	EXHAUST VALVE	1							
9	1	160490-11120	SPRING, VALVE	2							
10	1	160664-11180	RETAINER, VALVE	2							
11	1	160690-11200	ARM, ROCKER	2							
12	1	160690-11220	PIVOT, ROCKER ARM	2							
13	1	160690-11270	BOLT	2							
I 13-1	1	160690-11271	BOLT	2							N
(A=E030025)											
14	1	160690-11280	NUT M6X 0.5	2							
15	1	160490-11290	GUIDE PLATE	1							
16	1	160490-11300	BONNET	1							
17	1	160490-11310	GASKET, BONNET	1							
18	1	26476-060142	BOLT M 6X 14,TAPPING	3							
19	1	160520-03050	BREATHER.MT.	1							
20	1	160610-03050	BREATHER ASSY	1							
21	1	160510-03180	PIPE, BREATHER	1							

Fig.3. TOOL & LABEL

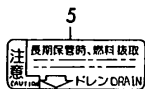
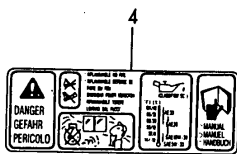
3. TOOL & LABEL



Clean out air filter every 20-30 hours. (every 10 hours in dusty areas)

After washing the sponge with kerosene, thoroughly wring out and let dry.

After drying, soak in new engine oil, wring well and use.



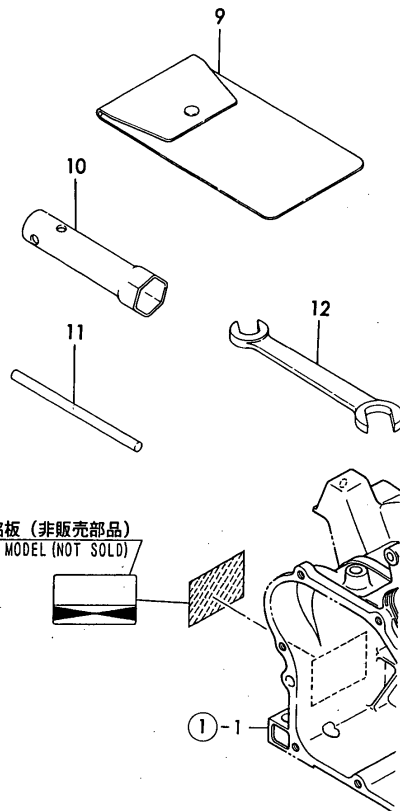
PULITE IL FILTRO DELL'ARIA OGNI 20-30 ORE DI LAVORO (OGNI 10 ORE IN AMBIENTE DI LAVORO POLVEROSO)

DOPO AVERE LAVATO CON KEROSENE L'ELEMENTO FILTRANTE IN SPUGNA, STRIZZATELO E LASCIATELO ASCIUGARE COMPLETAMENTE.

UNA VOLTA ASCIUTTO, IMBEVETELO CON OLIO MOTORE E STRIZZATELO BENE PRIMA DI REINSTALLARLO.

NETTOYER FILTRE A AIR PAR DE 20 A 30 HEURES. (NETTOYER PER 10 HEURES A ENDROIT POUSSIEREUX)

NETTOYER EPONGE AVEC HUILE D'ECLAIRAGE OU ESSENCE ET SECHER BIEN APRES PRESSER. ENSUITE PLONGER DANS ESSENCE POUR ENLEVER HUILE EXCEDENT EN BIEN PRESSANT.



機体銘板 (非販売部品)
LABEL MODEL (NOT SOLD)

N075344

Remarks
(REMARKS)"EFFECTIVE MACHINE NO." OF ENGINE IS INDICATED ON THE ENGINE LABEL WHICH IS SHOWN IN FIG.1.
(1) REF.NO.5 YANMAR LIGHT YELLOW, 5-1 YANMAR NEW RED.

OCNP2-G63200 3. TOOL & LABEL

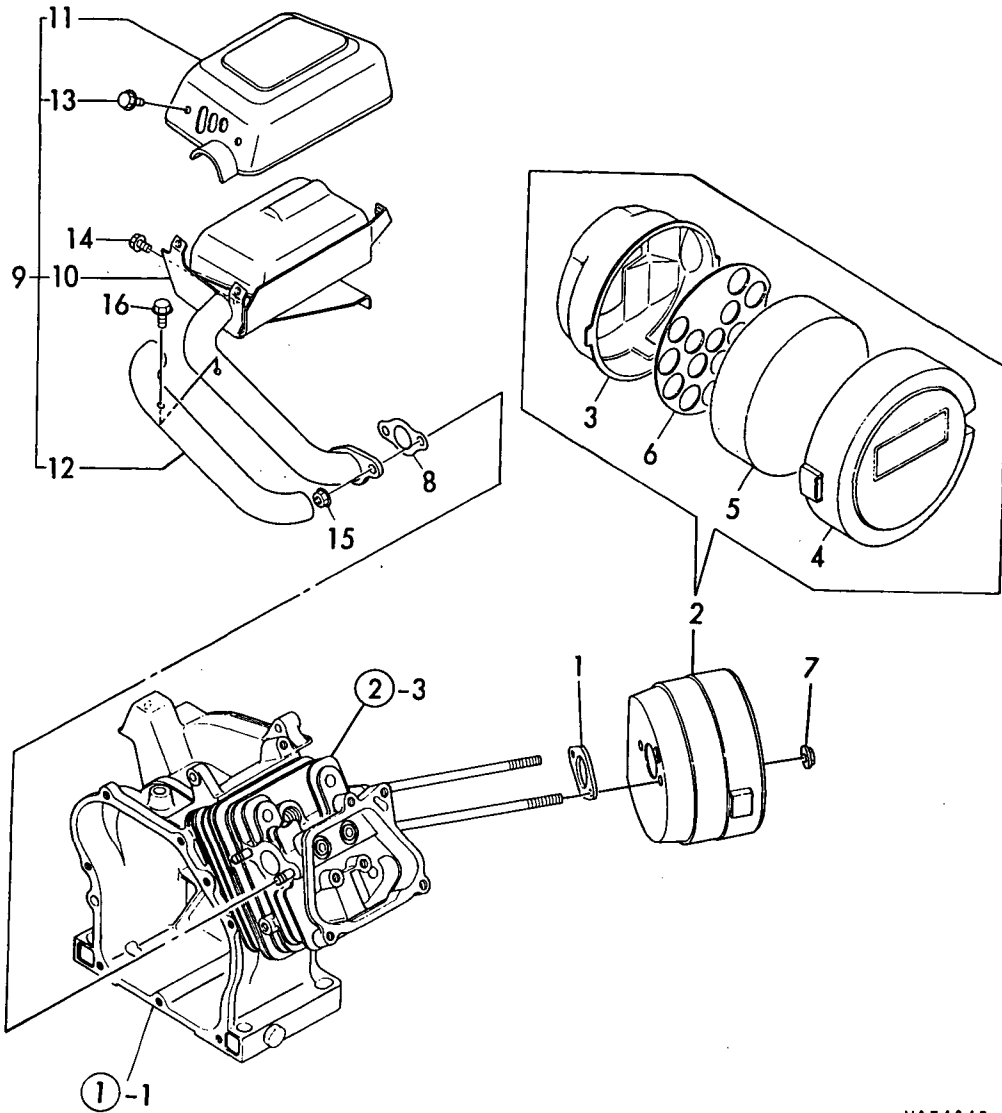
(A)=GA90E-SCKN
(B)=
(C)=

(D)=
(E)=
(F)=

REF.	LEV.	PARTS NO.	DESCRIPTION	QTY						I	R
				(A)	(B)	(C)	(D)	(E)	(F)		
2	1	160798-07100	LABEL, FINGER START	1							
4	1	160708-07260	MARK, CAUTION	1							
5	1	160520-07271	LABEL, DRAIN	1							
I	5-1	160520-07272 (A=E033621)	LABEL, DRAIN	1							S 1
I	6	160664-07360	LABEL, AIR CLEAWER	1							
I	7	160662-07370	LABEL, AIR CLEANER	1							
	8	160664-07370	LABEL, AIR CLEANER	1							
	9	160110-92610	BAG, TOOL	1							
	10	160120-92700	SPANNER, BOX	1							
	11	160110-92710	BAR	1							
	12	28110-100120	WRENCH 10X12	1							

Fig.4. AIR CLEANER & MUFFLER

4. AIR CLEANER & MUFFLER



N074345

Remarks
 (REMARKS) "EFFECTIVE MACHINE NO." OF
 ENGINE IS INDICATED ON THE
 ENGINE LABEL WHICH IS SHOWN
 IN FIG.1.

0CNP2-G63200 4. AIR CLEANER & MUFFLER

(A)=GA90E-SCKN

(B)=

(C)=

(D)=

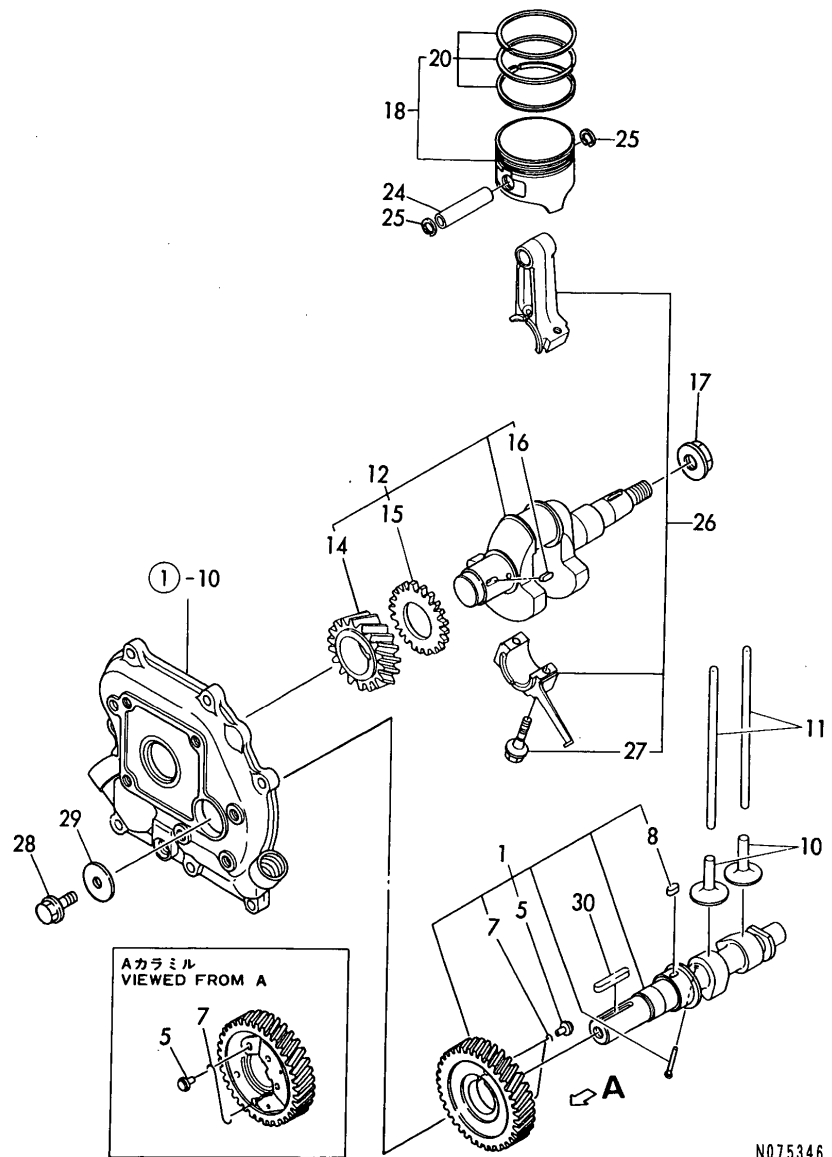
(E)=

(F)=

REF.	LEV.	PARTS NO.	DESCRIPTION	QTY						I	R
				(A)	(B)	(C)	(D)	(E)	(F)		
1	1	160762-12050	GASKET, IN. MANIFOLD	1							
I 1-1	1	160762-12050	GASKET, IN. MANIFOLD	2							K
(A=E030620)											
2	1	160490-12500	CLEANER ASSY, AIR	1							
3	2	160490-12520	BODY, AIR CLEANER	1							
4	2	160610-12530	CAP, AIR CLEANER	1							
5	2	160610-12540	ELEMENT, AIR CLEANER	1							
6	2	160610-12550	HOLDER, ELEMENT	1							
7	1	26366-060002	NUT M 6	2							
8	1	160510-13200	GASKET, MUFFLER	1							
9	1	160493-13550	MUFFLER	1							
I 9-1	1	160493-13551	MUFFLER ASSY	1							R
(A=E032840)											
10	2	160493-13500	MUFFLER	1							
I 10-1	2	160493-13501	MUFFLER	1							R
(A=E032840)											
I 11	2	160493-13530	COVER, MUFFLER	1							
I 12	2	160493-13780	COVER, ELBOW	1							
I 13	2	26106-060082	BOLT M 6X 8 PLATED	4							
14	1	26106-060082	BOLT M 6X 8 PLATED	1							
I 14-1	1	26476-060142	BOLT M 6X 14,TAPPING	1							S
(A=E032840)											
15	1	26366-060002	NUT M 6	2							
I 16	1	26476-060142	BOLT M 6X 14,TAPPING	1							Z
(A=E032840)											

Fig.5. CRANKSHAFT,PISTON & CAMSHAFT

5. CRANKSHAFT,PISTON & CAMSHAFT



Remarks
 (REMARKS)"EFFECTIVE MACHINE NO." OF
 ENGINE IS INDICATED ON THE
 ENGINE LABEL WHICH IS SHOWN
 IN FIG.1.

OCNP2-G63200 5. CRANKSHAFT,PISTON & CAMSHAFT

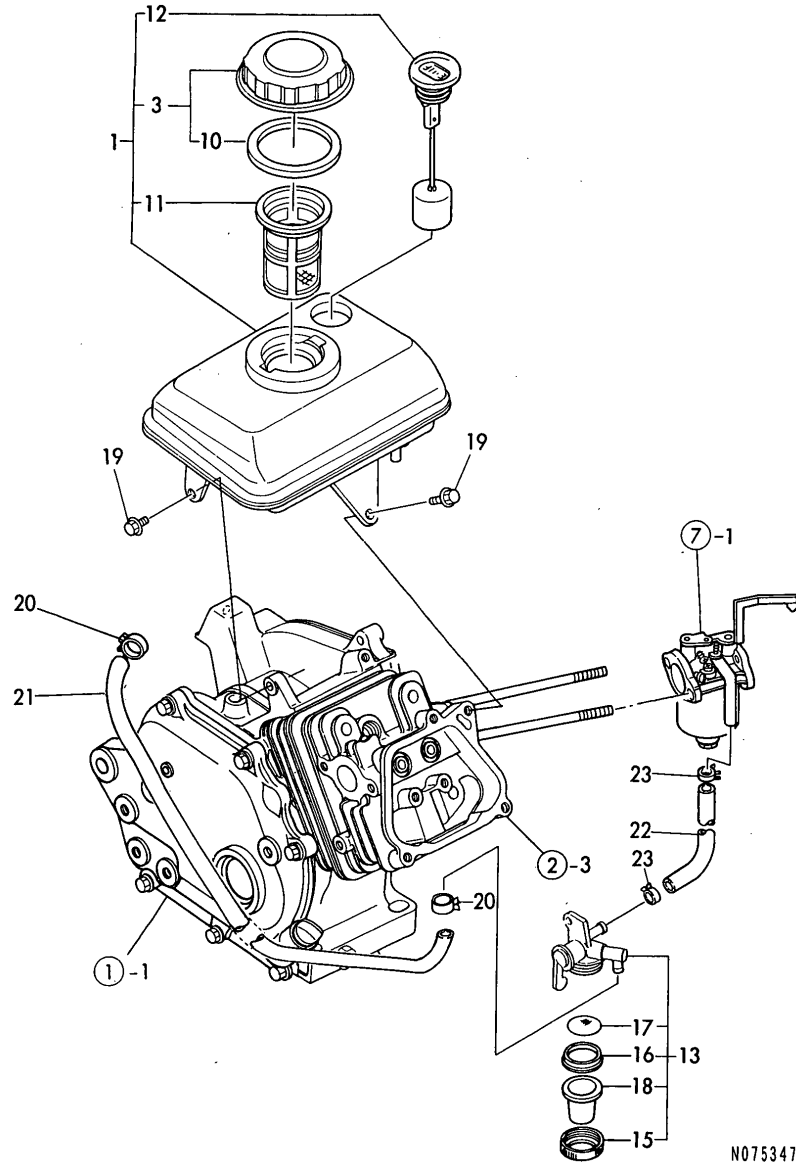
(A)=GA90E-SCKN
 (B)=
 (C)=

(D)=
 (E)=
 (F)=

REF.	LEV.	PARTS NO.	DESCRIPTION	QTY						I	R
				(A)	(B)	(C)	(D)	(E)	(F)		
1	1	160490-14050	CAMSHAFT ASSY	1							
7	2	160611-14560	SPRING	1							
8	2	114250-21290	KEY 4X 7	1							
10	1	160490-14200	TAPPET	2							
11	1	160490-14400	ROD,PUSH	2							
12	1	760490-21700	CRANKSHAFT ASSY	1							
14	2	160530-21200	GEAR, CRANKSHAFT	1							
15	2	160590-21210	GEAR, IDLE	1							
16	2	160610-21290	KEY 4X 10	1							
17	1	26376-120002	U-NUT M12	1							
18	1	160490-22010	PISTON ASSY	1							
20	2	760490-22500	RING SET, PISTON	1							
24	1	160490-22300	PIN, PISTON	1							
25	1	22252-000120	CIRCLIP 12	2							
26	1	160490-23030	ROD ASSY, CONNECTING	1							
27	2	160610-23201	BOLT, ROD	2							
I 27-1	2	26106-060302	BOLT M 6X 30 PLATED	2							R
(A=E091603)											
28	1	26106-060162	BOLT M 6X 16 PLATED	1							
29	1	160510-14550	WASHER	1							
30	1	160810-21290	KEY 4X24	1							

Fig.6. FUEL OIL TANK & FUEL OIL LINE

6. FUEL OIL TANK & FUEL OIL LINE



Remarks
 (REMARKS)"EFFECTIVE MACHINE NO." OF
 ENGINE IS INDICATED ON THE
 ENGINE LABEL WHICH IS SHOWN
 IN FIG.1.

OCNP2-G63200 6. FUEL OIL TANK & FUEL OIL LINE

(A)=GA90E-SCKN

(B)=

(C)=

(D)=

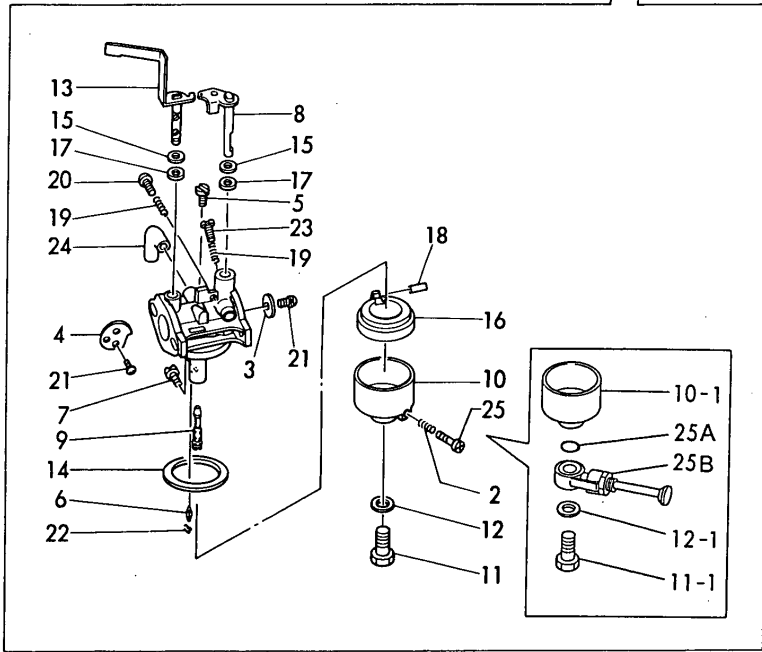
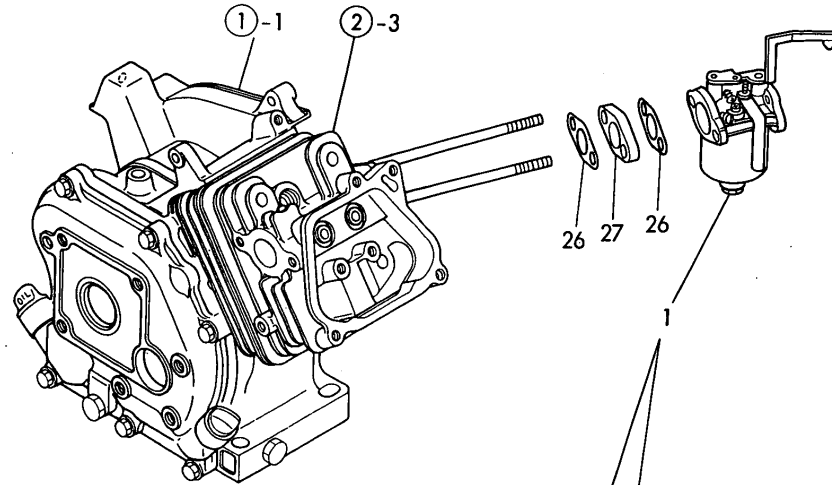
(E)=

(F)=

REF.	LEV.	PARTS NO.	DESCRIPTION	QTY						I	R	
				(A)	(B)	(C)	(D)	(E)	(F)			
1	1	760491-55700	TANK ASSY ,FUEL	1								
I	1-1	760493-55700	TANK,FUEL (RED)(50)	1								N
		(A=EXXX)										
3	2	160710-55061	CAP ASSY, FUEL TANK	1								
10	3	160393-55050	GASKET, TANK CAP	1								
11	2	160610-55100	STRAINER	1								
12	2	183210-55150	GAUGE, FUEL	1								
13	1	160593-55300	COCK ASSY, FUEL	1								
15	2	160710-55360	RING	1								
16	2	160710-55370	GASKET	1								
17	2	160710-55382	FILTER	1								
18	2	160610-55390	CUP, COCK	1								
19	1	26476-060142	BOLT M 6X 14,TAPPING	3								
20	1	106990-44660	BAND, HOSE	2								
21	1	160491-59350	PIPE, FUEL	1								
22	1	160490-59360	HOSE, FUEL (B-145)	1								
23	1	124060-77680	CLAMP 10	2								

Fig.7. CARBURETOR

7. CARBURETOR



N075348

Remarks
 (REMARKS)"EFFECTIVE MACHINE NO." OF
 ENGINE IS INDICATED ON THE
 ENGINE LABEL WHICH IS SHOWN
 IN FIG.1.

OCNP2-G63200 7. CARBURETOR

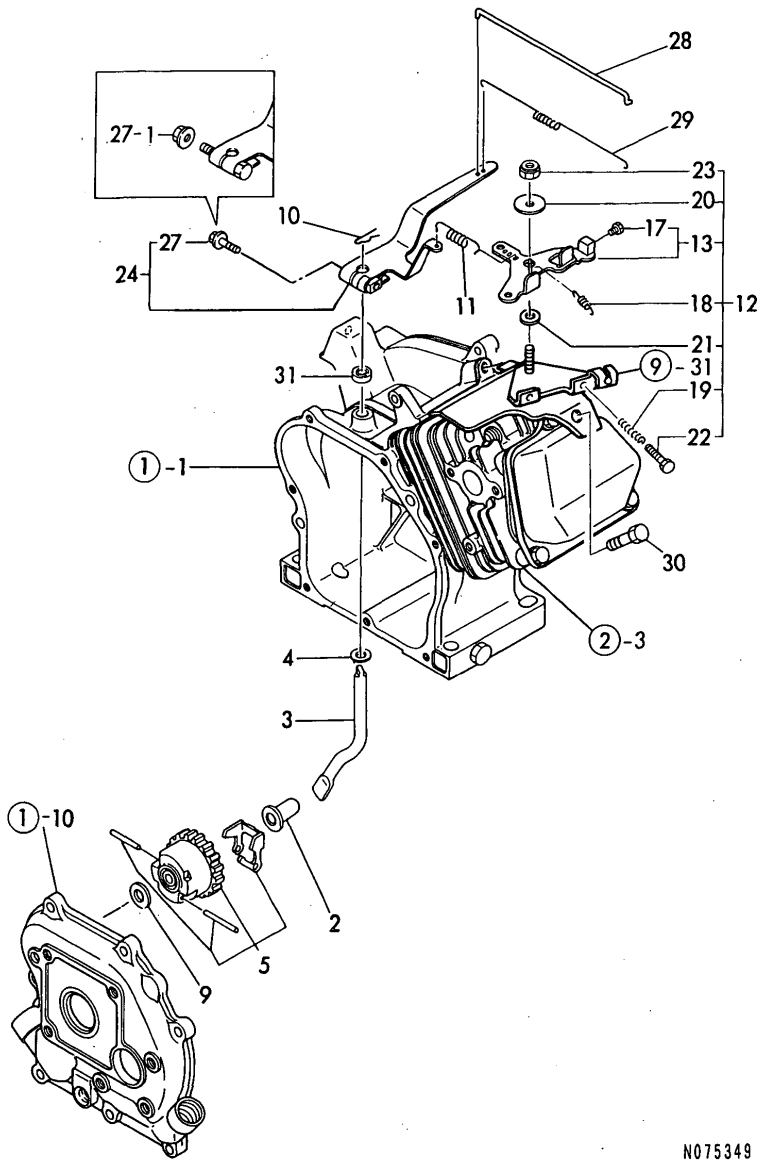
(A)=GA90E-SCKN
 (B)=
 (C)=

(D)=
 (E)=
 (F)=

REF.	LEV.	PARTS NO.	DESCRIPTION	QTY						I	R
				(A)	(B)	(C)	(D)	(E)	(F)		
1	1	160490-56010	CARBURETOR ASSY	1							
I	1-1	160490-56011	CARBURETOR ASSY	1							N
		(A=E038225)									
I	1-2	160491-56010	CARBURETOR COMPL.	1							N
		(A=E047515)									
I	2	181230-56380	SPRING	1							Z
		(A=E047515)									
3	2	160492-56520	VALVE, THROTTLE	1							
4	2	160492-56530	VALVE	1							
5	2	160492-56540	JET, PILOT	1							
6	2	160492-56550	NEEDLE	1							
7	2	160495-56560	JET, MAIN	1							
I	7-1	160495-56561	JET, MAIN	1							N
		(A=E038225)									
8	2	160492-56570	SHAFT ASSY, THROTTLE	1							
9	2	160492-56580	NOZZLE, MAIN	1							
I	9-1	160492-56581	NOZZLE, MAIN	1							N
		(A=E038225)									
10	2	160490-56590	BODY, FLOAT	1							
I	10-1	160492-56591	BODY, FLOAT	1							S
		(A=E047515)									
11	2	160490-56600	BOLT	1							
I	11-1	160492-56600	BOLT M5	1							S
		(A=E047515)									
12	2	160495-56600	GASKET	1							
I	12-1	160802-56480	GASKET	1							S
		(A=E047515)									
13	2	160492-56610	SHAFT, CHOKE	1							
14	2	160510-56610	GASKET	1							
15	2	160492-56620	GASKET	2							
16	2	160510-56620	FLOAT ASSY	1							
17	2	160492-56630	SEAL	2							
18	2	160610-56630	PIN, FLOAT	1							
19	2	181130-56640	SPRING	2							
20	2	160692-56710	SCREW	1							
21	2	160710-56710	SCREW	3							
22	2	160769-56720	CLAMP	1							
23	2	160667-56750	SCREW, ADJUSTING	1							
24	2	160692-56770	HOSE	1							
I	25	160610-56900	SCREW	1							Z
		(A=E047515)									
I	25A	160692-56620	O-RING	1							W
		(A=E047515)									
I	25B	160692-56760	BODY, COCK	1							W
		(A=E047515)									
26	1	160667-56150	GASKET, CARBURETOR	2							
27	1	160667-56160	SPACER, CARBURETOR	1							

Fig.8. GOVERNOR & CONTROL DEVICE

8. GOVERNOR & CONTROL DEVICE



N075349

Remarks
 (REMARKS) "EFFECTIVE MACHINE NO." OF
 ENGINE IS INDICATED ON THE
 ENGINE LABEL WHICH IS SHOWN
 IN FIG.1.

OCNP2-G63200 8. GOVERNOR & CONTROL DEVICE

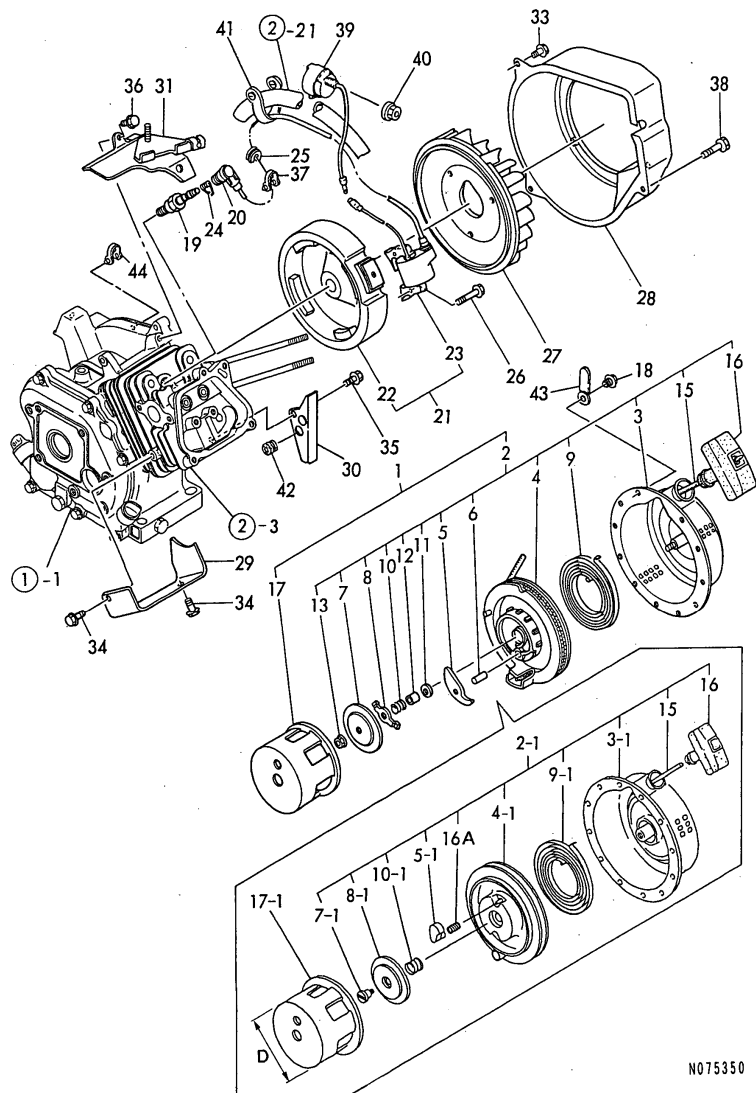
(A)=GA90E-SCKN
 (B)=
 (C)=

(D)=
 (E)=
 (F)=

REF.	LEV.	PARTS NO.	DESCRIPTION	QTY						I	R
				(A)	(B)	(C)	(D)	(E)	(F)		
2	1	160690-61300	SPINDLE, GOVERNOR	1							
3	1	160690-61310	SHAFT, GOV. LEVER	1							
4	1	160690-61450	WASHER	2							
5	1	160690-61600	GEAR ASSY, GOV.	1							
9	1	160120-76940	WASHER	1							
10	1	22372-080000	SNAP PIN (JASO 8)	1							
11	1	160490-66010	SPRING	1							
I 11-1	1	160490-66020	SPRING	1							N
(A=E047915)											
12	1	160493-66110	CONTROL ASSY	1							
13	2	160493-66051	LEVER ASSY, CONTROL	1							
17	3	26117-040088	BOLT M 4X 8 PLATED	1							
18	2	160664-66220	SPRING, RETURN	1							
19	2	160520-66291	SPRING	2							
20	2	160670-66350	COLLAR	1							
21	2	160120-76940	WASHER	1							
22	2	26117-040257	BOLT M 4X 25	2							
23	2	26347-060002	U-NUT M 6	1							
24	1	160490-66190	LEVER, GOVERNOR	1							
27	2	26106-060252	BOLT M 6X 25 PLATED	1							
I 27-1	2	26366-060002	NUT M 6	1							S
(A=E091603)											
28	1	160490-66200	LINK, THROTTLE	1							
I 29	1	160490-66211	SPRING	1							
I 30	1	26476-060142	BOLT M 6X 14,TAPPING	2							Z
(A=FROM 1ST)											
I 31	1	114770-61600	SEAL, OIL	1							W
(A=E038225)											

Fig.9. FLY.MAGNET & STARTING DEVICE

9. FLY.MAGNET & STARTING DEVICE



Remarks
 (REMARKS)"EFFECTIVE MACHINE NO." OF ENGINE IS INDICATED ON THE ENGINE LABEL WHICH IS SHOWN IN FIG.1.
 (1) D= REF.NO.17 75M/M, 17-1 64.2M/M.
 (2) DIFFERENCE BETWEEN NO.9 & 9-1 REFER TO NO.4 & 4-1.

OCNP2-G63200 9. FLY.MAGNET & STARTING DEVICE

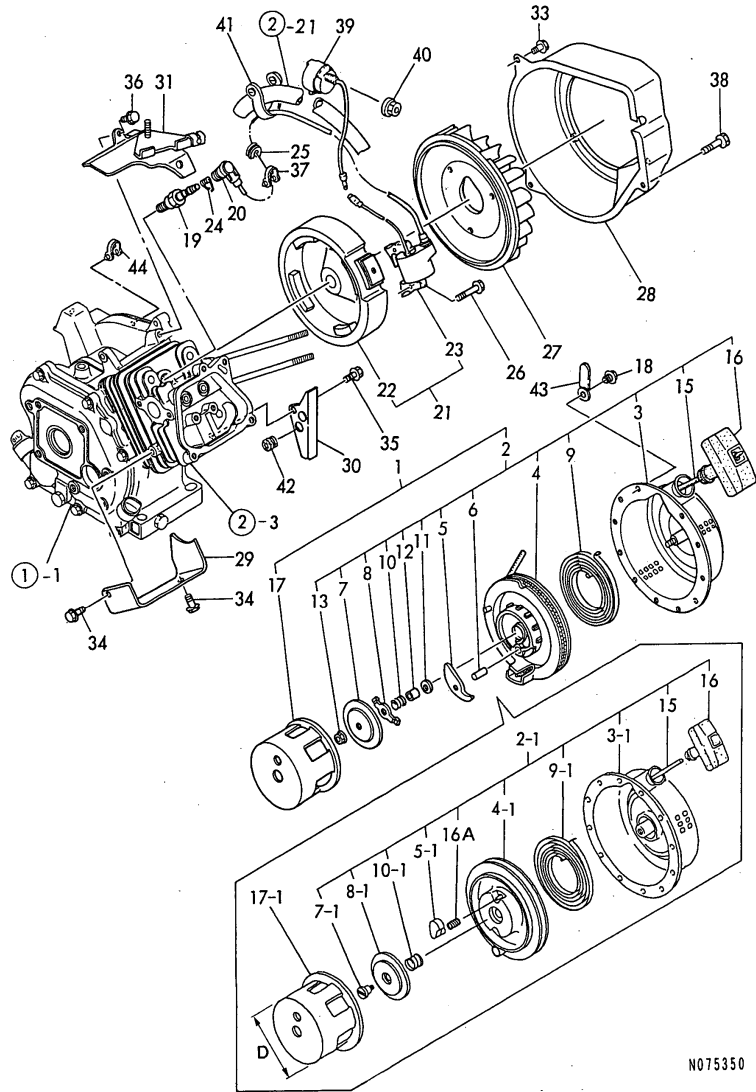
(A)=GA90E-SCKN
 (B)=
 (C)=

(D)=
 (E)=
 (F)=

REF.	LEV.	PARTS NO.	DESCRIPTION	QTY						I	R
				(A)	(B)	(C)	(D)	(E)	(F)		
1	1	160490-76050	STARTER ASSY, RECOIL	1							
I 1-1	1	160490-76051	STARTER ASSY, RECOIL	1							N
		(A=E091603)									
2	2	160490-76250	STARTER ASSY, RECOIL	1							
I 2-1	2	160490-76251	RE-COIL STARTER	1							S
		(A=E091603)									
3	3	160490-76610	CASE, STARTER	1							
I 3-1	3	160490-76611	CASE ASSY, STARTER	1							S
		(A=E091603)									
4	3	160490-76510	REEL	1							
I 4-1	3	160490-76511	REEL	1							S
		(A=E091603)									
5	3	160692-76800	RATCHET	1							
I 5-1	3	160690-76801	RATCHET	1							S
		(A=E091603)									
6	3	160692-76530	PIN, RATCHET	1							Z
		(A=E091603)									
7	3	160692-76810	PLATE, FRICTION	1							
I 7-1	3	160690-76580	PLATE, FRICTION	1							S
		(A=E091603)									
8	3	160692-76540	GUIDE, RATCHET	1							
I 8-1	3	160690-76531	GUIDE, RATCHET	1							S
		(A=E091603)									
9	3	160692-76580	SPRING, SPIRAL	1							
I 9-1	3	160690-76540	SPRING, SPIRAL	1							S 2
		(A=E091603)									
10	3	160692-76550	SPRING, FRICTION	1							
I 10-1	3	160690-76561	SPRING, FRICTION	1							S
		(A=E091603)									
11	3	160692-76560	WASHER, THRUST	1							
I 12	3	160692-76820	SHAFT	1							Z
		(A=E091603)									
13	3	26367-060002	NUT M 6	1							Z
		(A=E091603)									
15	3	160490-76580	ROPE, STARTER	1							
I 16	3	160490-76600	KNOB, STARTER	1							
I 16A	3	160690-76570	SPRING, RETURN	2							W
		(A=E091603)									
17	2	160490-76590	PULLEY, STARTER	1							
I 17-1	2	160490-76591	PULLEY, STARTER	1							S 1
		(A=E091603)									
18	1	26106-060082	BOLT M 6X 8 PLATED	4							
19	1	160690-78010	PLUG, SPARK	1							
I 19-1	1	160690-78020	PLUG, SPARK	1							N
		(A=E036288)									
20	1	160700-78040	CAP, PLUG	1							
21	1	160490-78050	FLYWHEEL MAGNETO	1							
22	2	160490-78500	ROTOR	1							
23	2	160490-78510	COIL, IGNITION	1							
24	1	160700-78050	TERMINAL, PLUG	1							
25	1	160700-78720	GROMMET	1							

Fig.9. FLY.MAGNET & STARTING DEVICE

9. FLY.MAGNET & STARTING DEVICE



OCNP2-G63200 9. FLY.MAGNET & STARTING DEVICE

(A)=GA90E-SCKN

(B)=

(C)=

(D)=

(E)=

(F)=

REF.	LEV.	PARTS NO.	DESCRIPTION	QTY						I	R
				(A)	(B)	(C)	(D)	(E)	(F)		
26	1	26476-060302	BOLT M 6X 30,TAPPING	2							
27	1	160525-45010	FAN	1							
28	1	160490-45110	CASE, FAN (RED) (50)	1							
29	1	160490-45200	COVER	1							
I 30	1	160490-45211	COVER, REAR	1							
31	1	160490-45220	HEAD, CYLINDER	1							
33	1	26476-060142	BOLT M 6X 14,TAPPING	2							
34	1	26476-060142	BOLT M 6X 14,TAPPING	2							
I 35	1	26476-060142	BOLT M 6X 14,TAPPING	1							
36	1	26476-060142	BOLT M 6X 14,TAPPING	2							
I 37	1	29610-000950	CLAMP, SPEED 095	1							
38	1	26476-060162	BOLT M 6X 16	1							
39	1	160611-77250	SWITCH, STOP	1							
40	1	26366-080002	NUT M 8	1							
I 41	1	29610-001400	CLAMP	1							W
		(A=E020573)									
I 42	1	160341-01950	PIPE	1							W
		(A=E019716)									
I 43	1	160710-78700	CLAMP, CORD	1							W
		(A=EXXXXX)									
I 43-1	1	160710-78700	CLAMP, CORD	1							Z
		(A=E032840)									
I 44	1	29610-000650	CLAMP, SPEED 065	1							W
		(A=E019716)									
I 44-1	1	29610-000650	CLAMP, SPEED 065	2							K
		(A=E032840)									

Remarks
 (REMARKS)"EFFECTIVE MACHINE NO." OF
 ENGINE IS INDICATED ON THE
 ENGINE LABEL WHICH IS SHOWN
 IN FIG.1.

(1) D= REF.NO.17 75M/M, 17-1 64.2M/M.
 (2) DIFFERENCE BETWEEN NO.9 & 9-1
 REFER TO NO.4 & 4-1.

Part Number Index

All parts are stipulated in the order of part numbers.

(Depending on the area in which the part is used.)

This index will display the location of the part according to each part number.

PARTS No. INDEX

PARTS No.	Fig.	Ref.No.
106990-44660	6	20
114250-21290	5	8
114270-01600	1	4 -1
114770-61600	8	31
124060-77680	6	23
160110-92610	3	9
160110-92710	3	11
160120-76940	8	9
		21
160120-92700	3	10
160341-01950	9	42
160393-55050	6	10
160490-01330	1	9
160490-11010	2	3
160490-11120	2	9
160490-11290	2	15
160490-11300	2	16
160490-11310	2	17
160490-12500	4	2
160490-12520	4	3
160490-14050	5	1
160490-14200	5	10
160490-14400	5	11
160490-22010	5	18
160490-22300	5	24
160490-23030	5	26
160490-45110	9	28
160490-45200	9	29
160490-45211	9	30
160490-45220	9	31
160490-56010	7	1
160490-56011	7	1 -1
160490-56590	7	10
160490-56600	7	11
160490-59360	6	22
160490-66010	8	11
160490-66020	8	11 -1
160490-66190	8	24
160490-66200	8	28
160490-66211	8	29
160490-76050	9	1
160490-76051	9	1 -1
160490-76250	9	2
160490-76251	9	2 -1
160490-76510	9	4
160490-76511	9	4 -1
160490-76580	9	15
160490-76590	9	17
160490-76591	9	17 -1
160490-76600	9	16

PARTS No.	Fig.	Ref.No.
160490-76610	9	3
160490-76611	9	3 -1
160490-78050	9	21
160490-78500	9	22
160490-78510	9	23
160491-56010	7	1 -2
160491-59350	6	21
160492-56520	7	3
160492-56530	7	4
160492-56540	7	5
160492-56550	7	6
160492-56570	7	8
160492-56580	7	9
160492-56581	7	9 -1
160492-56591	7	10 -1
160492-56600	7	11 -1
160492-56610	7	13
160492-56620	7	15
160492-56630	7	17
160493-13500	4	10
160493-13501	4	10 -1
160493-13530	4	11
160493-13550	4	9
160493-13551	4	9 -1
160493-13780	4	12
160493-66051	8	13
160493-66110	8	12
160495-56560	7	7
160495-56561	7	7 -1
160495-56600	7	12
160510-02220	1	7
		15
160510-03180	2	21
160510-13200	4	8
160510-14550	5	29
160510-56610	7	14
160510-56620	7	16
160520-03050	2	19
160520-07271	3	5
160520-07272	3	5 -1
160520-66291	8	19
160525-45010	9	27
160530-21200	5	14
160590-21210	5	15
160593-55300	6	13
160610-03050	2	20
160610-04201	1	21
160610-04570	2	1
160610-04620	2	2
160610-12530	4	4

PARTS No.	Fig.	Ref.No.
160610-12540	4	5
160610-12550	4	6
160610-21290	5	16
160610-23201	5	27
160610-55100	6	11
160610-55390	6	18
160610-56630	7	18
160610-56900	7	25
160611-01740	1	18
160611-14560	5	7
160611-77250	9	39
160662-07370	3	7
160664-07360	3	6
160664-07370	3	8
160664-11100	2	7
160664-11110	2	8
160664-11180	2	10
160664-66220	8	18
160667-56150	7	26
160667-56160	7	27
160667-56750	7	23
160670-66350	8	20
160690-11200	2	11
160690-11220	2	12
160690-11270	2	13
160690-11271	2	13 -1
160690-11280	2	14
160690-61300	8	2
160690-61310	8	3
160690-61450	8	4
160690-61600	8	5
160690-76531	9	8 -1
160690-76540	9	9 -1
160690-76561	9	10 -1
160690-76570	9	16 A
160690-76580	9	7 -1
160690-76801	9	5 -1
160690-78010	9	19
160690-78020	9	19 -1
160692-56620	7	25 A
160692-56710	7	20
160692-56760	7	25 B
160692-56770	7	24
160692-76530	9	6
160692-76540	9	8
160692-76550	9	10
160692-76560	9	11
160692-76580	9	9
160692-76800	9	5
160692-76810	9	7

PARTS No.	Fig.	Ref.No.
160692-76820	9	12
160700-78040	9	20
160700-78050	9	24
160700-78720	9	25
160708-07260	3	4
160710-55061	6	3
160710-55360	6	15
160710-55370	6	16
160710-55382	6	17
160710-56710	7	21
160710-78700	9	43
		43 -1
160762-12050	4	1
		1 -1
160769-56720	7	22
160798-07100	3	2
160802-56480	7	12 -1
160810-21290	5	30
181130-56640	7	19
181230-56380	7	2
183210-55150	6	12
760490-01500	1	10
760490-01560	1	1
760490-21700	5	12
760490-22500	5	20
760491-55700	6	1
760493-55700	6	1 -1



YANMAR CO., LTD.